



Molecular Signatures of Immunity and Immunogenicity in Infection and Vaccination

Mariëlle C. Haks¹, Barbara Bottazzi², Valentina Cecchinato³, Corinne De Gregorio³, Giuseppe Del Giudice⁴, Stefan H. E. Kaufmann⁵, Antonio Lanzavecchia³, David J. M. Lewis⁶, Jeroen Maertzdorf⁵, Alberto Mantovani^{2,7}, Federica Sallusto^{3,8}, Marina Sironi², Mariagrazia Uguccioni^{3,7} and Tom H. M. Ottenhoff^{1*}

¹ Department of Infectious Diseases, Leiden University Medical Center, Leiden, Netherlands, ² Humanitas Clinical and Research Center, Rozzano, Italy, ³ Institute for Research in Biomedicine, Università della Svizzera italiana, Bellinzona, Switzerland, ⁴ GSK Vaccines, Siena, Italy, ⁵ Department of Immunology, Max Planck Institute for Infection Biology, Berlin, Germany, ⁶ University of Surrey, Guildford, United Kingdom, ⁷ Humanitas University, Department of Biomedical Sciences, Pieve Emanuele-Milan, Italy, ⁸ Institute of Microbiology, ETH Zurich, Zurich, Switzerland

OPEN ACCESS

Edited by:

Rashika El Ridi,
Cairo University, Egypt

Reviewed by:

Francesco Dieli,
Università degli Studi di
Palermo, Italy
Katie Louise Flanagan,
Monash University, Australia

*Correspondence:

Tom H. M. Ottenhoff
t.h.m.ottenhoff@lumc.nl

Specialty section:

This article was submitted to
Vaccines and Molecular
Therapeutics,
a section of the journal
Frontiers in Immunology

Received: 13 September 2017

Accepted: 31 October 2017

Published: 15 November 2017

Citation:

Haks MC, Bottazzi B, Cecchinato V,
De Gregorio C, Del Giudice G,
Kaufmann SHE, Lanzavecchia A,
Lewis DJM, Maertzdorf J,
Mantovani A, Sallusto F, Sironi M,
Uguccioni M and Ottenhoff THM
(2017) Molecular Signatures of
Immunity and Immunogenicity
in Infection and Vaccination.
Front. Immunol. 8:1563.
doi: 10.3389/fimmu.2017.01563

Vaccinology aims to understand what factors drive vaccine-induced immunity and protection. For many vaccines, however, the mechanisms underlying immunity and protection remain incompletely characterized at best, and except for neutralizing antibodies induced by viral vaccines, few correlates of protection exist. Recent omics and systems biology big data platforms have yielded valuable insights in these areas, particularly for viral vaccines, but in the case of more complex vaccines against bacterial infectious diseases, understanding is fragmented and limited. To fill this gap, the EC supported ADITEC project (<http://www.aditecproject.eu/>; <http://stm.sciencemag.org/content/4/128/128cm4.full>) featured a work package on “Molecular signatures of immunity and immunogenicity,” aimed to identify key molecular mechanisms of innate and adaptive immunity during effector and memory stages of immune responses following vaccination. Specifically, technologies were developed to assess the human immune response to vaccination and infection at the level of the transcriptomic and proteomic response, T-cell and B-cell memory formation, cellular trafficking, and key molecular pathways of innate immunity, with emphasis on underlying mechanisms of protective immunity. This work intersected with other efforts in the ADITEC project. This review summarizes the main achievements of the work package.

Keywords: vaccines, biomarkers, immunity and infections, immunity, assays

INTRODUCTION

One of the key goals in vaccinology is to understand what factors drive protective immunity induced by vaccines. In many cases, the precise mechanisms underlying such immunity remain unknown, or at best incompletely characterized. Except for the case of neutralizing antibodies induced by viral vaccines, very few correlates of protection exist. The availability of omics technologies and advanced systems biology big data analytical platforms has enabled large scale analyses of vaccine-induced responses. These efforts revealed novel insights into immunity and correlates of protection, for example, in the human response to yellow fever and influenza vaccination (1, 2). However, for more complex vaccines such as those against bacterial infectious diseases, such understanding as yet is mostly lacking.

To fill this gap, EC FP7 supported ADITEC innovative project featured a work package on “Molecular signatures of immunity and immunogenicity.” The working group aimed to identify key

molecular mechanisms of innate and adaptive immunity during effector and memory stages of immune responses following vaccination. Specifically, technologies were developed to assess the human immune response to vaccination and infection at the level of the transcriptomic and proteomic response, T-cell and B-cell memory formation, cellular trafficking, and key molecular pathways of innate immunity, with emphasis on underlying mechanisms of protective immunity. This work was integrated with efforts in other sections of the ADITEC project, such as a work package on immunity and vaccine-induced responses in early life and aging; and work packages on the human response to adjuvants in clinical and translational vaccinology.

The following specific issues will be addressed in detail below:

1. An extended multiplex transcriptomic profiling assay [dual-color Reverse-Transcription Multiplex Ligation-dependent Probe Amplification (dcRT-MLPA)] was developed for bio-profiling the human immune response following vaccination against human infectious diseases, with particular emphasis on transcriptomic signatures of innate, adaptive, regulatory, inflammatory, and memory responses. Determination of optimal responses and dense kinetic transcriptomic response measurements will be helpful in optimizing novel immunization strategies.
2. This platform was complemented by global transcriptomic gene expression profiling (mRNA as well as micro-RNA) following vaccination with a complex vaccine, the live recombinant bacille Calmette–Guérin (BCG) (VPM1002), which had been tested in infants and adults. Transcriptomic analyses were used to dissect novel mechanisms and correlates of immunity and safety, with particular emphasis on age and temporal changes following vaccination.
3. Complementing the work on transcriptomics, quantitative proteomic profiles were determined using novel platform technologies, including hydrogen deuterium exchange (HDX) coupled to mass spectrometry (MS). HDX–MS was used to define functionally active epitopes and antibodies in polyclonal sera following vaccination. Complementing studies addressed the role of T follicular helper (T_{fh}) cells and explored their presence in the blood as possible biomarkers of protective vaccine efficacy.
4. A key feature of vaccine-induced immunity is the formation of antigen-specific memory T-cells and B-cells, and their ability to migrate to the correct tissue sites. New technology platforms to analyze human B-cell and T-cell immune repertoires, suitable to interrogate large number of B-cells or T-cells for the first time, allowed a comprehensive analysis of the memory response in all its cellular components. A combination of experimental approaches (antigenic stimulation, TCR deep sequencing and cloning of Th1, Th2, and Th17 memory subsets) allowed the dissection of T-cell subset responses, showing that pathogen- or vaccine-induced T-cells are functionally heterogeneous and comprise both clones polarized toward a single fate, as well as clones whose progeny has acquired multiple fates. By immortalizing memory B-cells from donors upon influenza vaccination, a new type of rarely occurring influenza-neutralizing antibodies targeting a conserved site in the hemagglutinin (HA) stem was found.
5. To dissect the molecular mechanisms regulating T-cell trafficking at mucosal sites in health and disease, T-cell migration in response to chemokines CCL20, CXCL10, and CXCL12 was assessed. T-cell migration in HIV-1 infection was evaluated as a model of impaired migration to mucosal sites, as it is well known that antiretroviral therapy (ART) therapy is not able to fully restore complete T-cell repopulation of the intestinal mucosa in HIV-1 infected patients. Both CCR6+ and CXCR3+ CD4+ T-cells from HIV-1 infected patients, albeit expressing the same number of chemokine receptor as in healthy individuals, were characterized by an inefficient polymerization of actin after receptor triggering, regardless of ART therapy. This impairment was also confirmed in a macaque SIV infection model. *In vivo* studies showed that persistent immune activation, but not the presence of the virus, was responsible for the alterations in the cytoskeleton machinery, resulting in altered cellular trafficking to the mucosal compartment. This could be redressed by pharmacological intervention, restoring effective lymphocyte migration. These results highlight the importance of evaluating the capability of Th cells to reach mucosal niches to support cell maturation and functional activity, particularly in individuals experiencing chronic immune activation, and thus suggest new molecular strategies for improved vaccination.
6. Activation of innate immunity is key to adjuvant activity and expression of vaccine effector mechanisms. Since plasticity and polarization are key components of innate immunity, key molecular markers of innate immunity were investigated in the context of adjuvant activity and expression of vaccine effector mechanisms. One focus was on the role of pentraxin 3 (PTX3), a member of the pentraxin family involved in innate resistance, as an endogenous adjuvant in vaccination using outer membrane vesicles (OMV) from *Neisseria meningitidis* (Nm) as a model vaccine. In addition, the role of PTX3 in innate resistance to pathogens, particularly in urinary tract infections was assessed. This work allowed the description of the association of PTX3 human genetic polymorphisms with susceptibility to infections with *Aspergillus fumigatus* in immunocompromised patients and with uropathogenic *Escherichia coli*. In addition, the role of PTX3 in tissue remodeling was defined and novel markers associated with macrophage polarization discovered.

Each of these topics will be discussed in more detail, followed by a concluding section.

A dcRT-MLPA ASSAY TO IDENTIFY NOVEL DIAGNOSTIC, PROGNOSTIC, AND PREDICTIVE BIOMARKERS IN RESPONSE TO VACCINATION, INFECTION, ACTIVE DISEASE, AND CURE

Dissecting innate, adaptive, and inflammatory immune signatures underlie the identification of biomarker signatures that can

be used to diagnose infection or disease; to predict progression toward disease in the infected host; to monitor the efficacy of disease treatment; or to predict (in)adequate responsiveness to novel or existing vaccines. The latter signatures will greatly aid the rational development, testing and evaluation of novel vaccines. They may also allow the study of the impact of host factors such as age (elderly vs. children), coinfection [HIV, CMV, Epstein–Barr virus (EBV), etc.], comorbidity (type 2 diabetes, allergic, and inflammatory disorders) or iatrogenic immunosuppression (biologicals, other immunosuppressants) on responses to vaccines.

To investigate such human immune responses at the transcriptomic level, we have developed a dcRT-MLPA assay (3). dcRT-MLPA is a focused gene expression profiling platform that has proven suitable to identify, monitor, and validate multicomponent host diagnostic and prognostic/predictive biomarker signatures in many human cohort studies (4). The studies described in this article focus on the discovery of diagnostic, prognostic, and therapy-responsive biomarker signatures mainly in tuberculosis (TB). Genes were selected for inclusion in the dcRT-MLPA targeted gene expression profiling platform based on their ability to assess various compartments of the human immune response, with key roles in inducing and skewing immune reactivity and inflammation. This included genes representing adaptive immune responses (T/NK/B-cell, Treg, and Th1/Th2/Th9/Th17 and Th22 responses, cytotoxicity, and cell subset markers); innate immune responses (myeloid associated markers and scavenger receptors, pattern recognition receptors, and inflammasome components); inflammatory and IFN-signaling genes; and genes associated with apoptosis, cell growth/proliferation, transcriptional regulators/activators, mitochondrial stress, and inflammation.

Diagnostic Biomarkers

Tuberculosis is a global health problem and the world's leading cause of death from infectious diseases [World Health (5)]. One-fourth of the worldwide population is latently infected with *Mycobacterium tuberculosis* (*Mtb*), the pathogen causing TB, while active disease develops in about 5–10% of infected individuals. Understanding the differences in immune responses between individuals able to control the infection versus those who develop active disease, preferably in a preclinical stage, would greatly facilitate vaccine development. However, since no correlates of protection have been uncovered yet and vaccination with BCG mainly contributes to the prevention and control of childhood but not adult TB, effective control of the TB pandemic still mainly depends on accurate diagnosis and early detection of active disease, allowing curative treatment to be initiated before TB transmission can occur. Because current immunological tools to diagnose TB infection, such as the tuberculin skin test and interferon-gamma release assays are not able to distinguish between latent TB infection (LTBI) and active TB disease, and have poor sensitivity in children and immune-compromised individuals, direct *ex vivo* whole blood RNA expression profiling was performed in genetically and geographically diverse adult, pediatric and HIV-infected cohorts to identify biomarkers that can classify clinical stages of TB independent of age, HIV status and genetic background.

Characterization of the human immune response to *Mtb* in cohorts from South Africa, Malawi, The Gambia, Ethiopia, India, and Paraguay identified biomarker signatures that were strongly associated with active TB and were strikingly distinct from that associated with latent infection or uninfected controls (3, 6–10). Although the compiled multicomponent signatures differed to a certain extent between study cohorts from different geographic origins, the most robust single classifier discriminating between active disease and latent infection or uninfected controls was *FCGR1A* [high-affinity IgG Fc receptor 1A (CD64)]. This marker is significantly higher expressed in individuals with active TB than in those with LTBI regardless of age (8, 10), HIV status (7, 9), or genetic differences (3, 6, 7). This demonstrates the power of this biomarker to classify the different clinical outcomes of exposure to *Mtb* and warrants further analysis of the role of *FCGR1A* in TB pathogenesis.

Biomarkers of the Curative Response to Therapy

Multi-, extensive-, and total-drug resistant TB (MDR/XDR/TDR-TB) continues to emerge and is primarily caused by the use of ineffective formulations of drugs (such as use of single drugs) and poor adherence by TB patients to the strict 6-month drug treatment regimen. Therefore, monitoring early kinetics in treatment responses is key to the effective delivery of anti-TB treatment (ATT) and to prevent *de novo* drug resistance.

Longitudinal follow up of TB cases during ATT showed that biomarkers that can discriminate active TB from LTBI and uninfected controls can also be used to monitor TB treatment responses independent of age, HIV status, or genetic background (3, 8; Gebremicael et al., forthcoming¹). In immune-competent adults from The Gambia, gene expression profiles normalized over time and were similar to those observed in LTBI and uninfected controls at the end of treatment (6 months) (3). However, changes in gene expression levels during ATT showed distinct kinetics. The expression levels of a proportion of genes normalized to the expression levels observed in LTBI within 2 months (e.g., *BLR1*), whereas others reached control levels only after the full 6 months of treatment (e.g., *FCGR1A*). Importantly, in HIV-coinfected TB patients, transcriptomic profiles of ATT treatment responses (including expression of *FCGR1A*) were identified that were not affected by highly active antiretroviral therapy, and that normalized to levels observed in HIV+ latently TB infected and uninfected controls after completion of ATT (see text footnote 1). Moreover, in an Indian pediatric cohort, baseline levels of *BLR1* and *FCGR1A* displayed a capacity of >70% to predict the six month treatment outcome (8). Together, these data suggest that *FCGR1A* could possibly serve as part of a reliable and robust predictive signature of the treatment response, and as such help optimizing personalized medicine in TB while minimizing *de novo* drug resistance, independent of age, immune status and genetic background.

¹Gebremicael GKD, Quinten E, Alemayehu Y, Gebreegziabier A, Belay Y, et al. Host gene expression kinetics during treatment of tuberculosis in HIV-coinfected individuals is independent of HAART therapy (Forthcoming).

Prognostic Biomarkers

Because most immunocompetent individuals maintain a lifelong latent infection with *Mtb* and active disease develops in only a minority of infected individuals, identification of correlates of TB progression would substantially contribute to combat the TB epidemic. In TB endemic areas, such biomarker signatures could identify individuals at risk of developing TB, allowing curative treatment to be initiated before TB transmission can occur.

Transcriptomic profiling of the immune responses of immune-competent adult progressors versus non-TB progressors in a well-characterized TB case-contact platform from The Gambia identified—among others—antiapoptotic gene *BCL2* as a marker that might predict the onset of active disease very early after infection (11). *BCL2* was significantly lower expressed in progressors compared with non-progressors, and dysregulation of *BCL2* occurred as early as 1 year before progression toward TB disease. Corroborating these findings at a cellular level, increased levels of apoptosis in effector T-cells were found to constitute a risk factor for TB disease progression (12).

In addition, in a retrospective case-control study in The Netherlands of a high risk population of HIV-infected drug users, *IL13* and *AIRE* were identified as markers correlating with progression to TB, months before clinical diagnosis (13). Furthermore, transcriptomic profiles of *IL13*-expressing TB cases were strongly enriched for type I IFN related signaling genes, suggesting that these genes represent processes that contribute to TB pathogenesis in HIV-infected individuals. Although the association between *IL-13-AIRE* and TB progression could not be validated in independent cohorts of HIV-negative South African and Gambian adult progressors and controls, activation of the interferon response, however, was validated as a signature predictive of progression toward active disease (14). Using RNA-Seq, a whole blood transcriptomic mRNA expression signature was identified in a large prospective cohort of LTBI adolescents based on the differential expression of 16 human genes (14). Interestingly, also *FCGR1A* (as well as *FCGR1B*) was again part of the predictive signature, in agreement with the importance of these and other IFN-regulated genes in TB pathogenesis.

Once these biomarker signatures have been validated in larger cohorts, they will provide an initial platform to improve diagnosis of TB, monitor TB therapeutic interventions and prospectively identify people at risk of developing TB. More importantly, these biomarker signatures may help unravel and improve our understanding of protective immunity to TB, which is a prerequisite for the development of an effective TB vaccine.

TRANSCRIPTOME PROFILES IN INFANTS VACCINATED WITH RECOMBINANT BCG VPM1002

The current TB vaccine *Mycobacterium bovis* BCG prevents severe disseminated TB in children, but fails to protect against pulmonary TB. The recombinant BCG Δ ureC:hly (VPM1002) was designed to improve safety and immunogenicity (15). This

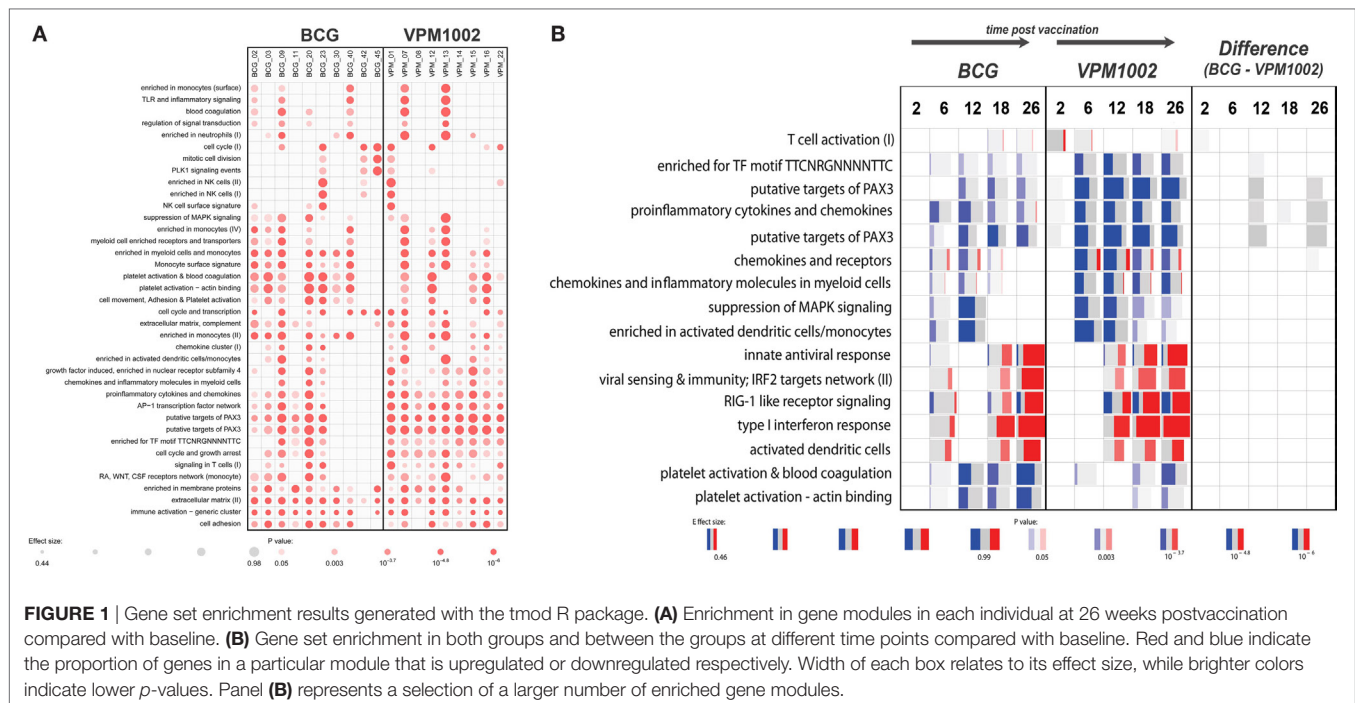
recombinant vaccine was modified to express the membrane-perturbing listeriolysin (Hly) of *Listeria monocytogenes*, allowing egression of mycobacterial antigens into the cytosol for better antigen presentation. Simultaneously, its urease C deficiency prevents VPM1002 from neutralizing the acidic pH inside the phagosome, which is required for the biological activity of Hly (16).

In vitro and animal studies have indicated an improved cross-priming and increased apoptosis in VPM1002 infected macrophages, resulting in improved vaccine efficacy over parental BCG (15, 16). Superior protection by VPM1002 was later shown to relate to earlier recruitment of type 1 cytokine producing T-cells and a profound capacity to produce type 17 cytokine responses, which was not seen after BCG vaccination (17). Moreover, VPM1002 stimulates enhanced AIM2 inflammasome activation, enhancing autophagy and secretion of (IL)-1 β and IL-18 (18). Experiments with immunodeficient mice revealed higher safety of VPM1002 as compared with parental BCG. Enhanced safety of VPM1002 is also illustrated by a lower incidence of abscess formation in immunized infants (19).

VPM1002 has now completed phase I clinical trials in healthy adults (19, 20) and a phase IIa trial in South African newborns. It is currently undergoing phase II trial assessment in HIV-exposed neonates (NCT01479972). Within the ADITEC project we have generated gene expression profiles from infants participating in the phase IIa trial. Two groups of 11 neonates each receiving either VPM1002 or parental BCG were included, and gene expression profiles were analyzed from samples taken at the time of immunization and at weeks 2, 6, 12, 18, and 26 postvaccination. Safety and immunogenicity data from this clinical trial revealed that safety parameters for VPM1002 and the parental BCG strain are comparable. Both vaccines induced IFN γ responses, while VPM1002 vaccination in addition resulted in an increased proportion of IL-17 producing CD8 T-cells (19).

The gene expression profiles that were generated showed a substantial variability in responses between individuals (Figure 1A). Following vaccination early after birth, dramatic changes in the gene expression profiles over time were observed in both groups. The most pronounced changes were associated with upregulation of immunoglobulin-related genes, which likely reflects the maturation of the immune system in infants. In a direct comparison between the groups vaccinated with parental BCG and VPM1002, we did not observe any significant differences in gene expression at any of the time points analyzed. Most likely, differences in gene expression induced by the two vaccines, if any, are too small to be detected and may be obscured by the pronounced changes over time. Second, this study was set up as a safety trial with a limited number of individuals. As a consequence, the gene expression analysis was statistically underpowered.

Therefore, we harnessed the power of gene modules, using a new bioinformatics tool called “tmod” (J. Weiner <https://cran.r-project.org/web/packages/tmod/index.html>) to calculate enrichments in genes associated with particular biological responses. Results from this analysis indicated subtle functional differences between the vaccination groups that could not be detected at the single gene level (Figure 1B). For example, the VPM1002



vaccinated group showed earlier and more pronounced changes in genes involved in T-cell activation. Similarly, a prolonged enrichment in myeloid/monocyte-associated genes could be observed in the VPM1002 group (**Figure 1B**). In a direct comparison between the groups, we did observe a weak enrichment suggesting a slightly stronger T-cell activation in the first weeks following VPM1002 immunization. Also, a more pronounced downregulation of PAX3 target genes and pro-inflammatory cytokine and chemokine expression in the VPM1002 group, although none of these enrichments were statistically significant (**Figure 1B**).

NOVEL TECHNOLOGIES FOR EPITOPE MAPPING FOR VACCINE DESIGN, AND EXPLORATION OF Tfh CELLS AS NOVEL BIOMARKERS

The analysis of the B-cell repertoire could not be considered complete if the fully sequenced IgG are not functionally characterized, quantified in the serum, and the epitopes recognized are not defined. All this provides essential information that can be used to guide vaccine design and optimization, eventually to predict vaccination efficacy and its duration. Considering that the majority of the functional B-cell epitopes are discontinuous non-linear epitopes having 3D-conformational structures, it is important to apply methodologies able to decipher these sometimes complex structures.

We used HDX coupled to MS to allow the mapping of conformational epitopes (21–27). The approach was also compared with the most sophisticated and available approaches such as protein chip (26, 27), phage display (21, 26, 27), X-ray (21), and cryo-EM

(24, 25). Modern HDX-MS is more straightforward, rapid, and routine than in the past. As a result, the breadth of applications of the method, including epitope mapping, has expanded (28). HDX-MS relies upon the rapid exchange of backbone amide hydrogen for deuterium when a protein is diluted into a deuterated buffer. Each exchange event increases the protein mass of 1 Da that can be monitored by MS. Epitope mapping through HDX is based on differential rates of deuterium incorporation by the antigen when it is bound or not with a specific mAb (29). When an antigen-antibody complex is formed, the interface between the two components can occlude solvent, thereby reducing the exchange rate due to the action of solvent steric exclusion. Deuterium incorporation of the free antigen and of the antigen-mAb complex is compared and antigen sequences that present reduced exchange kinetics when the antigen is bound to mAb are highlighted as potential epitopes.

In a first phase, we probed the binding between mAb 12C1 and fHbp, using hybrid approaches including peptide arrays, X-ray crystallography, phage display, and HDX-MS, evidencing that HDX-MS, although not the highest resolution method, is the most effective in providing nearly complete information about the structure of epitopes (21). The approach has sufficient resolution to recognize fHbp overlapping epitopes with different functional properties (22). It was also successfully applied to map epitopes from NadA (23, 26) and NHBA (27), the two other protective epitopes of the vaccine against group B meningococcus, Bexsero. Hybrid approaches making use of HDX-MS and electron microscopy also evidenced the power of HDX-MS to map viral antigen epitopes of CMV gH-gL complex. In addition, to better characterizing the immune response to vaccination and to support antigen design, this method that speeds up the elucidation of recognized epitope will contribute to increase the

number of available structures of antigens and antigen–antibody complexes, opening new possibilities for the development of novel tools that might reliably predict protective epitopes.

INFLUENZA-SPECIFIC CIRCULATING T-CELL SUBSETS AS EARLY PREDICTORS OF SPECIFIC ANTIBODY RESPONSES

Development of vaccines is a long endeavor requiring long and expensive clinical trials to prove the efficacy of vaccines in the relevant target populations. The availability of biomarkers predicting protection or predicting protective immune responsiveness may accelerate the development of vaccines.

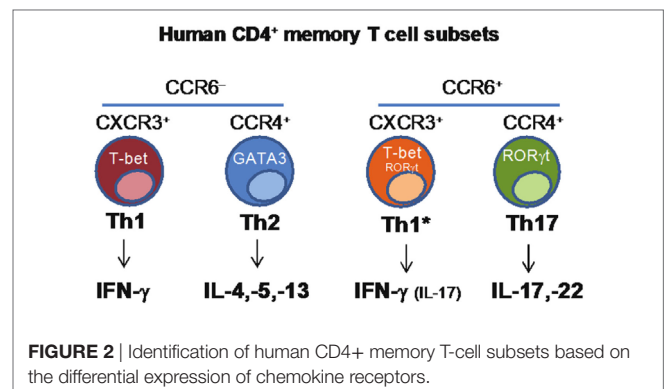
T follicular helper cells are a CD4⁺ T-cell subpopulation that is identifiable in lymph nodes and tonsils. Tfh cells are specialized in providing help to B-cells (30–32). The identification of a circulating counterpart of the Tfh subset in the blood (33, 34) would allow the measurement of these cells following vaccination, which may help defining markers predicting vaccine efficacy. Therefore, the question was to investigate whether IL-21+ CD4⁺ T-cells induced by specific vaccination were detectable in human blood, if and how vaccination modulated their frequency, and whether their expansion correlated with increased titers of functional antibodies. Indeed, following vaccination with MF59-adjuvanted avian H5N1 vaccine, H5N1-specific IL-21+ CD4⁺ T-cells were detectable in the blood, expanded after vaccination and accumulated in the CXCR5–ICOS1+ subset. The rise of vaccine-specific ICOS1+ IL-21+ CD4⁺ T-cells appeared to predict the postvaccination increase of functional antibodies in these vaccines. Finally, circulating CXCR5–ICOS1+ CD4⁺ T-cells contained increased numbers of T-cells able to help influenza-specific B-cell differentiation, such that they differentiated *in vitro* into antibody-secreting cells in a manner that was dependent on IL-21– and ICOS1 (35). More recent studies have confirmed these findings and have also shown that the early expansion of cells with a Tfh phenotype predicts the long term persistence of neutralizing antibodies against influenza virus (36). Thus, the expansion of antigen-specific ICOS1+ IL-21+ CD4⁺ T-cells in the circulation may represent an early predictor of a vaccine's ability to stimulate vaccine-specific immunity and a useful surrogate marker of a vaccine's immunogenicity in human beings.

HETEROGENEITY OF MEMORY CD4⁺ T-CELLS INDUCED BY PATHOGENS OR VACCINES

CD4⁺ T helper cells are crucial players in the adaptive immune response, contributing to protection against a wide range of pathogens through the functional regulation of other immune and non-immune cell types. CD4⁺ T helper cells are characterized by functional diversity that has evolved to provide the most appropriate type of response against different classes of pathogens in different tissues (37). Th1 cells produce IFN γ , express the transcription factor T-bet and, through the activation of macrophages, contribute to immunity against intracellular pathogens.

Th2 cells produce IL-4, IL-5, and IL-13, express the transcription factor GATA-3 and, through the activation of eosinophils and mast cells, contribute to protection against helminth parasites. Th17 cells produce IL-17A, IL-17F, and IL-22, express ROR γ t and together with neutrophils, mediate protection against fungi and extracellular bacteria. Th1, Th2, and Th17 cells differ also in the expression of chemokine receptors that control their homing ability, a property that is coordinately obtained during the process of T-cell differentiation (38). CCR5 and CXCR3 are expressed by Th1 cells, CCR4, CCR3, and CCR6 by Th2 cells, and CCR6 and CCR4 by Th17 cells. While the role of distinct subsets of CD4⁺ T-cells in protection against different types of pathogens has long been recognized, it has been unclear whether a given vaccine or pathogen will induce a single type of T-cells and whether a single naive T-cell challenged by a pathogen or by a vaccine may acquire multiple T-cell fates.

We combined antigenic stimulation, TCR deep sequencing and cloning of human Th1, Th2, and Th17 memory subsets, to study the distribution and TCR repertoire of pathogen- and vaccine-specific T-cells in immune donors (39). We found that memory T-cells induced by *Candida albicans* are present at high frequency in a CCR6⁺ compartment, which comprises Th17 and a subpopulation of Th1 cells co-expressing T-bet and ROR γ t (defined as Th1*), and at low frequency in a CCR6[–] compartment, which comprises classical Th1 and Th2 cells (40) (Figure 2). We could then demonstrate, using next-generation TCR V β sequencing, that multiple different clonotypes were present in more than one subset and, in several cases even in all subsets, whereas by contrast other clonotypes were found only in one particular subset. We also studied tetanus toxoid (given with alum as adjuvant) vaccine-induced memory T-cells. Also in this case, TCR V β sequencing revealed a high level of clonotype sharing among Th1, Th2, Th1*, and Th17 subsets, with multiple different clonotypes represented in three and even all four subsets. By contrast, *Mtb*-specific memory T-cells in healthy donors were highly enriched in the Th1* subsets, with some specific T-cells present in the Th17 subset. In contrast to what was observed for *C. albicans*, however, only very few clonotypes were shared between *Mtb*-specific Th1* and Th17. Taken together, our results indicate that human T-cells induced by pathogens or vaccines are functionally heterogeneous and comprise both clones polarized toward a single fate, as well as clones whose progeny has acquired



multiple fates. The highly significant intraclonal heterogeneity observed in this work further supports the one cell-multiple fates model of CD4 T-cell differentiation; furthermore these data reveal T-cell plasticity in the context of the human T-cell immune response. An important question that this study raises is whether the induction of functionally diverse T-cell subsets by for instance a vaccine is advantageous for the host. Clearly, defective induction of the correct type of Th cell response may increase susceptibility to infections, while the induction of a wider spectrum of different T-cell types, including effector and memory T-cells with different migratory abilities would enlarge the range of differentiated precursors that the host could recruit and expand whenever necessary.

A NEW CLASS OF RARE INFLUENZA-NEUTRALIZING ANTIBODIES TARGET A CONSERVED SITE IN THE HA STEM

By immortalizing memory B-cells from donors upon influenza vaccination, a new type of rarely occurring influenza-neutralizing antibodies, targeting a conserved site in the HA stem was found.

High throughput cellular screens have been developed and used to isolate potently and broadly neutralizing antibodies against a plethora of pathogens. We used EBV in the presence of CpG to immortalize memory B-cells with high efficiency, and screened culture supernatants for the presence of the desired antibodies using multiple assays based on binding or viral neutralization. Using this approach, we studied the antibody response to influenza HA. The neutralizing antibody response is dominated by antibodies binding the most variable part of the HA, the globular head, which is undergoing antigenic drift continuously. As a consequence, most of anti-head antibodies, which are detected using the classical hemagglutination inhibition assay, neutralize only a few isolates within a given subtype. We and others have previously described hetero-subtypic neutralizing antibodies that can bind and neutralize different influenza virus subtypes, comprising group 1 viruses and even group 1 and group 2 viruses (41). The broadly neutralizing antibodies target a conserved site in the HA stem and use a particular VH gene, VH1-69. These antibodies are highly mutated, and they are produced by some but not all individuals. This would suggest that a series of somatic mutations may be necessary for the development of such antibodies. To address the developmental pathway of anti-stem antibodies, we isolated, from a single donor, 197 VH1-69+ anti-stem antibodies. Using sequence information, we performed a genealogical analysis to reconstruct the developmental pathways of a number of the VH1-69 clones. We identified key elements which were required for affinity maturation. In all cases tested, the binding to HA was exclusively dependent on the mutated VH, while the light chain did not play a significant role since it could be substituted by irrelevant L chains. Strikingly, in most clones, affinity maturation was achieved through a single somatic mutation leading to a proline to alanine substitution at position 52a in HCDR2. This mutation was the first to occur in the B-cell clone and was

sufficient to confer high-affinity binding to the selecting H1 antigen. This observation is consistent with rapid affinity maturation. Unexpectedly, however, further favorable mutations continued to accumulate, which further increased the breadth of antibody reactivity while making both the initial mutations functionally redundant. We also determined that phenylalanine 54, which was characteristic of all antibodies, was an essential binding residue. Interestingly, this position is polymorphic and individuals lacking a phenylalanine 54 allele did not produce VH1-69 antibodies to the HA stem. Finally, all VH1-69 anti-stem antibodies shared a 13-aminoacid-long HCDR3 with a tyrosine at position 98. This study defines VH1-69 polymorphism, HCDR3 sequence constraints and an individual somatic mutation as the three requirements involved in the generation of broadly neutralizing antibodies. It also reveals an hitherto unknown and unexpected redundancy in process of affinity maturation (42).

MOLECULAR MECHANISMS REGULATING T-CELL TRAFFICKING AT MUCOSAL SITES IN HEALTH AND DISEASE: CHRONIC IMMUNE ACTIVATION DAMPENS LEUKOCYTE TRAFFICKING AND CALLS FOR NOVEL VACCINATION STRATEGIES

The homing of leukocytes in general, and antigen-specific T-cells in particular, to peripheral tissues, mucosal sites, and secondary lymphoid organs is controlled, among others, by the local production of chemokines, the expression of chemokine receptors on the cell surface, and an efficient cytoskeleton machinery (43, 44). The characterization of the surface expression of the different chemokine receptors on T-cells has guided the discovery of different T helper cell subsets and is still a precious tool for the characterization of novel functional subsets. Nevertheless, scanty information is available on the influence that pathological conditions can have on the activity of chemokine receptors, even if their expression on the T-cell surface remains unaltered compared with healthy individuals. In health and disease, the microenvironment can further control cell migration, by releasing factors that cooperate with chemokines for enhancing cell responses (45–49), or by producing natural chemokine antagonists that block chemokine-induced activities (49). In addition, to the proteins produced by the microenvironment, systemic chronic immune activation can dampen T-cell responses to chemokines (50). HIV-1 infection is a clear example for this phenomenon, since chronic immune activation due to microbial translocation has been associated with poor T-cell repopulation of the intestinal mucosa during ART (51, 52). CD4+ T-cells expressing the chemokine receptors CCR6+ and/or CXCR3+ can traffic to the intestine in response to CCL20 and to IFN γ -induced chemokines, to help maintain the integrity of the mucosal barrier (53). In HIV-1 infected patients, regardless of ART therapy, CD4+ T-cells inefficiently migrate after chemokine triggering, due to an unproductive polymerization of actin (50). Interestingly, an *in vivo* model

of sustained toll-like receptor (TLR) 7 triggering with R848 recapitulated chronic immune activation, lymphoid system disruption, and poor response to chemokines as observed in HIV-1-mediated pathology (50, 54). It is indeed the persistent immune activation, and not the presence of the virus, that is causing the impaired response to chemokines. This deficiency is due to alterations in the cytoskeleton machinery that could be used as a marker to assess T-cell anergy caused by TLR7 triggering (55). Pharmacological intervention acting on the cytoskeleton can restore a proper response to chemokines both *in vitro* and *in vivo* (50) and represents novel therapeutic approaches, which are also amenable for combination with other therapies such as ART. It will be important to verify indeed whether such new immunotherapeutic interventions, aimed at dampening chronic immune activation during HIV-1 infection (56), result in efficient restoration of leukocyte migration. This is of particular interest since chronic activation of the immune system is not only present in HIV-1 infection, but is also a signature of other persistent infections as well as autoimmunity. Moreover, inflammation is a major component of senescence and aging-associated pathology (57–59). The study of frail cohorts of individuals and patients will identify those in need of receiving novel vaccine formulations that would improve the ability of leukocytes to migrate to the site of vaccination and later also during infection to properly mount an effective immune response.

DISSECTING INNATE IMMUNITY AND DEVELOPING TOOLS FOR INNATE IMMUNE BIOPROFILING

Activation of an innate inflammatory response is a key step in the mechanisms of action of adjuvants. Gene expression profiling of the mouse muscle injected with different adjuvants revealed modulation of a cluster of innate immunity genes, including particularly: cytokines, cytokine receptors, chemokines, adhesion molecules, and proteins involved in host–pathogen interactions (60). In particular the long PTX3, a soluble pattern recognition molecule identified in the 1990s (61), was among the over 1,000 genes upregulated by adjuvant treatment. PTX3 is classified as a member of the pentraxins, a family of highly conserved molecules characterized by a unique multimeric structure (62, 63; Garlanda et al., forthcoming²). Based on the sequence of the composing promoters, two subfamilies can be distinguished: short and long pentraxins. C-reactive protein (CRP) and serum amyloid P component are prototypic short pentraxins, by contrast PTX3 is a prototypic long pentraxin subfamily member.

Despite their sequence homologies, CRP and PTX3 differ in molecular structure, gene organization and cellular sources. CRP is produced only by the liver in response to IL-6 while PTX3 is produced locally and more rapidly by myeloid and stromal cells in response to primary pro-inflammatory cytokines (IL-1 β

and TNF- α) and ligation of TLRs. In addition, PTX3 is stored in neutrophils-specific granules, from which it is promptly released upon microbial recognition (63). From a functional point of view, PTX3 is endowed with multifunctional properties at the crossroad of inflammation, innate immunity, tissue remodeling, and female fertility. Of note, PTX3 plays an essential non-redundant role in resistance to selected microbes. The protein has antibody-like properties, binding selected pathogens (i.e., *A. fumigatus*, *Pseudomonas aeruginosa*, and more) and conserved microbial moieties (outer membrane protein A from *Klebsiella pneumoniae*; HA glycoprotein from influenza virus), and facilitating phagocytosis of recognized microbes in a manner dependent on Fc γ receptors and complement (64, 65). Moreover, PTX3 orchestrates complement activity (66) and, by regulating complement-dependent tumor promoting inflammation, can act as an extrinsic oncosuppressor gene in murine and human tumors (67). Finally, recent results obtained in different models of tissue damage highlighted a non-redundant role of PTX3 in remodeling and repair of tissue *via* its interaction with fibrin (68). This further supports the evidence that the recognition of matrix and microbial components is shared ancestral features of the humoral arm of the innate immune system.

In view of the upregulation of PTX3 by selected adjuvants we investigated the role of this protein in the antibody response using a well-known model of vaccination with OMV from *Nm*. We found that PTX3 binds *Nm* as well as OMV derived from *Nm*, exerting a protective role in a model of infection with *Nm* in the infant rat. *Ptx3*-deficient mice vaccinated with OMV without any adjuvant developed a lower antibody response compared with WT mice. In addition, co-injection of PTX3 enhanced the antibody response, especially in *ptx3*-deficient mice. Recognition of the antigen is essential for the effect exerted by PTX3, since immunization with an antigen not recognized by PTX3, such as ovalbumin, induced similar response in WT and *ptx3*-/- mice (69). This observation was confirmed by further investigations showing that *ptx3*-/- mice produced lower levels of IgM in response to administration of Pneumovax, a human vaccine containing capsular polysaccharide from multiple *Streptococcus pneumoniae* (*Sp*) serotypes (70). Similarly, *ptx3*-/- mice produced less antibodies following immunization with PR8 influenza A virus, which is also recognized by PTX3 (71), and in both cases PTX3 administration restored the response. Searching for an explanation of these effects, it has been found that PTX3 was released by B helper neutrophils (NBh) and bound to B-cells located in the marginal zone (MZ) in the spleen. NBh are an innate-like subset of antibody-producing cells positioned at the interface of the adaptive immune system and the circulation. The interaction between PTX3 and MZ-B-cells activated signals that were independent of Fc γ R but triggered class-switching from IgM to IgG. PTX3 promoted MZ-B-cell differentiation into extrafollicular plasmablasts and plasma cells, and enhanced IgM and IgG responses to the encapsulated bacterium *Sp*, or after immunization with capsular polysaccharides or bacterial carbohydrates. These results indicate that the humoral pattern recognition molecule PTX3, produced in response to pro-inflammatory cytokines or selected adjuvants, may amplify

²Garlanda C, Bottazzi B, Magrini E, Inforzato A, Mantovani A. PTX3, a key component of humoral innate immunity at the interface between defense and tissue remodeling. *Physiol Rev* (Forthcoming).

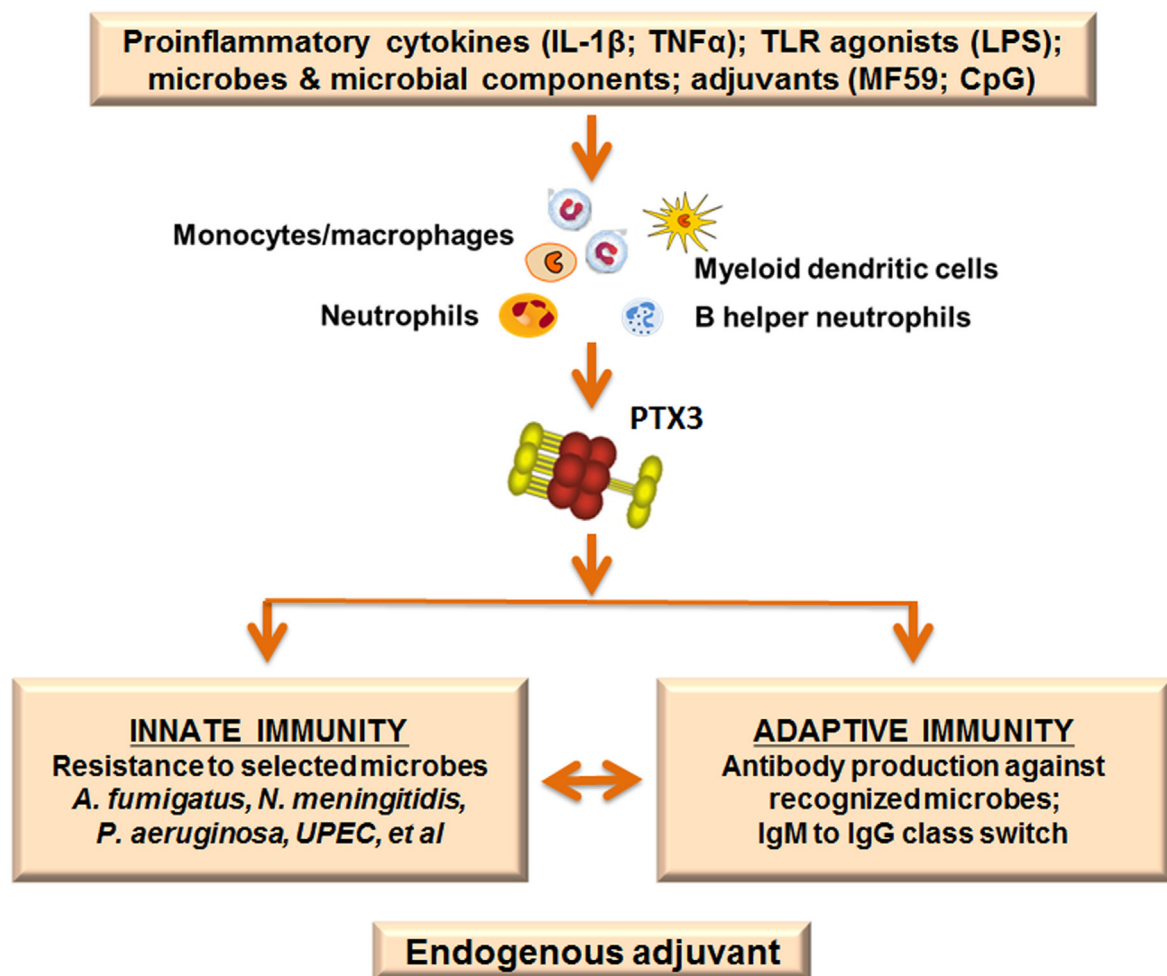


FIGURE 3 | Pentraxin 3 (PTX3) as endogenous adjuvant. PTX3 is locally produced at sites of infection or inflammation by myeloid cells in response to primary pro-inflammatory cytokines and toll-like receptor (TLR) engagement. In addition, the PTX3 gene is rapidly upregulated after treatment with selected adjuvants (MF59; CpG). PTX3 plays essential roles in the immune response to recognized pathogens: it is an active player in the innate immune response to microbes, acting as an opsonin and enhancing phagocytosis. Moreover, PTX3 is involved in immunoglobulin production and class switching from IgM to IgG, promoting humoral adaptive responses. The function of PTX3 as a bridge between the humoral arms of the innate and adaptive immune systems is in agreement with a role as endogenous adjuvant.

effective adaptive antibody responses that are induced by antigens recognized by PTX3, thus serving as an endogenous adjuvant (Figure 3).

The data outlined above provide a rationale to evaluate whether PTX3 could be a correlate of the shaping of the immune response induced by adjuvants in humans. In collaboration with D. J. Lewis and G. Del Giudice, PTX3 and CRP plasma levels were measured in a cohort of individuals injected with placebo or with licensed influenza vaccines adjuvanted or not. This study received ethical approval from London—Surrey Borders Research Ethics Committee (REC Ref: 13/LO/0044) and was registered on ClinicalTrials.gov before enrollment (NCT01771367). Preliminary unpublished results evidenced an increase in PTX3 plasma levels at early time points in individuals injected with the adjuvanted vaccine, confirming in humans the effects on PTX3 gene upregulation initially observed in mice (60). In addition,

after immunization with an adjuvanted vaccine we observed an earlier induction of PTX3 (peak at 24 h postinjection) compared with CRP (peak at 48 h postinjection), likely due to the local expression of PTX3 versus the systemic production of CRP.

Several single nucleotide polymorphisms (SNPs) have been described in the human *PTX3* gene, mainly located in its non-coding regions with the only exception of one exonic SNP causing an amino acid variation in position 48 (Asp48Ala). *PTX3* haplotypes are associated with increased susceptibility to lung TB (72), *P. aeruginosa* infections in cystic fibrosis Caucasian patients (73), *A. fumigatus* infections in bone marrow transplanted patients (74), and urinary tract infections (75). Results in a large cohort of patients with fungal infections after solid organ transplantation (76) and in 2,609 bone marrow transplanted patients and their donor pairs (77) further reinforced the association of *PTX3* gene SNPs and susceptibility to fungal infection. The

protection-associated haplotypes were also associated with higher PTX3 protein expression and circulating levels (74, 76), supporting an active role of PTX3 as non-redundant player involved in the innate defense against recognized pathogens.

In summary PTX3, a molecule of the innate immune system, produced in response to pro-inflammatory mediators, not only acts as an antibody-like molecule, recognizing pathogens and promoting their removal but also helps in antibody production by adaptive immunity, acting as endogenous adjuvant. This is schematically depicted in **Figure 3**.

CONCLUDING REMARKS

Understanding the factors that are critical for the induction of protective immunity by vaccines is key for the rational development of novel vaccines and to optimize vaccine efficacy. Within the ADITEC work package “Molecular signatures of immunity and immunogenicity,” the aim was to identify key molecular mechanisms of innate and adaptive immunity following vaccination and to uncover correlates of protection at the transcriptomic, proteomic and cellular level.

Transcriptomic profiling identified IFN-inducible gene *FCGR1A* as one of the most robust and consistent single biomarkers that could serve as part of reliable predictive signatures discriminating active TB disease from latent infection, identifying individuals at risk of developing TB, and monitoring TB treatment response kinetics. Such signatures are useful in stratifying risk groups for preventive treatment or clinical vaccine testing, as well as minimizing treatment duration and preventing possible *de novo* drug resistance, independent of age, immune status and genetic background. By contrast, when comparing transcriptome profiles between infants vaccinated with parental or recombinant BCG VPM1002 to unravel the mechanisms underlying superior protection against TB by VPM1002, differences at the single gene level could not be detected. Therefore, a new bioinformatics tool (tmod) was used to calculate enrichments in genes, uncovering more pronounced changes in T-cell activation and myeloid/monocyte-associated genes in the VPM1002 vaccinated group. Complementing the work on transcriptomics, HDX-MS was used to determine quantitative proteomic profiles and was successfully applied to define functionally active epitopes and antibodies in polyclonal sera following vaccination for various bacterial vaccines.

At the cellular level, early expansion of vaccine-specific CD4⁺ Tfh cells in peripheral blood was found to predict long term

persistence of neutralizing antibodies against influenza virus, suggesting this to be a possible biomarker of protective vaccine efficacy. In addition, it was observed that vaccine-induced human CD4⁺ T-cells are functionally heterogeneous and comprise not only clones polarized toward a single fate but also clones that fit the one cell-multiple fates model of CD4 T-cell differentiation. This suggests that inducing broader range of effector and memory T-cells with broad and different functional properties would benefit the host by expanding the number of options to respond to pathogens. Parameters affecting the ability of leukocytes to properly migrate to the site of vaccination and mount an effective immune response were also investigated. Interestingly, persistent immune activation caused impaired T-cell trafficking at mucosal sites, which was due to alterations in the cytoskeleton machinery. Pharmacological intervention acting on the cytoskeleton could restore a proper response to chemokines, calling for novel vaccination strategies in frail individuals. Finally, PTX3 was identified as a molecule produced by the innate immune system in response to pro-inflammatory mediators and was shown to be involved in the innate defense against recognized pathogens. PTX3 functions as an endogenous adjuvant, bridging the humoral arms of the innate and adaptive immune systems.

In summary, within the ADITEC work package “Molecular signatures of immunity and immunogenicity,” dissecting the human innate and adaptive immune response to vaccination and infection identified not only novel biomarker signatures at the transcriptomic, proteomic, and cellular level that could serve as potential correlates of risk and of protection but also uncovered novel markers and mechanisms underlying protective immunity. Validating and further expanding on these findings will advance our understanding of protective immunity, which is a key step toward the development of effective novel vaccines.

AUTHOR CONTRIBUTIONS

All the authors have contributed a section to the manuscript, based on their research in the EC FP7 ADITEC project.

FUNDING

The authors gratefully acknowledge funding by the European Commission, EC FP7 ADITEC Grant Agreement No. 280873. The text represents the authors' views and does not necessarily represent a position of the Commission who will not be liable for the use made of such information.

REFERENCES

- Gaucher D, Therrien R, Kettaf N, Angermann BR, Boucher G, Filali-Mouhim A, et al. Yellow fever vaccine induces integrated multilineage and polyfunctional immune responses. *J Exp Med* (2008) 205:3119–31. doi:10.1084/jem.20082292
- Trombetta CM, Montomoli E. Influenza immunology evaluation and correlates of protection: a focus on vaccines. *Expert Rev Vaccines* (2016) 15:967–76. doi:10.1586/14760584.2016.1164046
- Joosten SA, Goeman JJ, Sutherland JS, Opmeer L, De Boer KG, Jacobsen M, et al. Identification of biomarkers for tuberculosis disease using a novel dual-color RT-MLPA assay. *Genes Immun* (2012) 13:71–82. doi:10.1038/gene.2011.64
- Haks MC, Goeman JJ, Magis-Escurra C, Ottenhoff TH. Focused human gene expression profiling using dual-color reverse transcriptase multiplex ligation-dependent probe amplification. *Vaccine* (2015) 33:5282–8. doi:10.1016/j.vaccine.2015.04.054
- Organization WH. *Global Tuberculosis Report*. Geneva, Switzerland: World Health Organisation (2016).
- Mihret A, Loxton AG, Bekele Y, Kaufmann SH, Kidd M, Haks MC, et al. Combination of gene expression patterns in whole blood discriminate between tuberculosis infection states. *BMC Infect Dis* (2014) 14:257. doi:10.1186/1471-2334-14-257
- Sutherland JS, Loxton AG, Haks MC, Kassa D, Ambrose L, Lee JS, et al. Differential gene expression of activating Fcγ receptor classifies active tuberculosis regardless of human immunodeficiency virus status or

- ethnicity. *Clin Microbiol Infect* (2014) 20:O230–8. doi:10.1111/1469-0691.12383
8. Jenum S, Dhanasekaran S, Lodha R, Mukherjee A, Kumar Saini D, Singh S, et al. Approaching a diagnostic point-of-care test for pediatric tuberculosis through evaluation of immune biomarkers across the clinical disease spectrum. *Sci Rep* (2016) 6:18520. doi:10.1038/srep18520
 9. Kassa D, Ran L, Jager W, Van Den Broek T, Jacobi R, Mekonen M, et al. Discriminative expression of whole blood genes in HIV patients with latent and active TB in Ethiopia. *Tuberculosis (Edinb)* (2016) 100:25–31. doi:10.1016/j.tube.2016.06.003
 10. Gjoen JE, Jenum S, Sivakumaran D, Mukherjee A, Macaden R, Kabra SK, et al. Novel transcriptional signatures for sputum-independent diagnostics of tuberculosis in children. *Sci Rep* (2017) 7:5839. doi:10.1038/s41598-017-05057-x
 11. Sutherland JS, Hill PC, Adetifa IM, De Jong BC, Donkor S, Joosten SA, et al. Identification of probable early-onset biomarkers for tuberculosis disease progression. *PLoS One* (2011) 6:e25230. doi:10.1371/journal.pone.0025230
 12. Elliott TO, Owolabi O, Donkor S, Kampmann B, Hill PC, Ottenhoff TH, et al. Dysregulation of apoptosis is a risk factor for tuberculosis disease progression. *J Infect Dis* (2015) 212:1469–79. doi:10.1093/infdis/jiv238
 13. Sloot R, Schim Van Der Loeff ME, Van Zwet EW, Haks MC, Keizer ST, Scholing M, et al. Biomarkers can identify pulmonary tuberculosis in HIV-infected drug users months prior to clinical diagnosis. *EBioMedicine*. (2015) 2:172–9. doi:10.1016/j.ebiom.2014.12.001
 14. Zak DE, Penn-Nicholson A, Scriba TJ, Thompson E, Suliman S, Amon LM, et al. A blood RNA signature for tuberculosis disease risk: a prospective cohort study. *Lancet* (2016) 387:2312–22. doi:10.1016/S0140-6736(15)01316-1
 15. Grode L, Seiler P, Baumann S, Hess J, Brinkmann V, Nasser Eddine A, et al. Increased vaccine efficacy against tuberculosis of recombinant *Mycobacterium bovis* bacille Calmette-Guerin mutants that secrete listeriolysin. *J Clin Invest* (2005) 115:2472–9. doi:10.1172/JCI24617
 16. Kaufmann SH, Cotton MF, Eisele B, Gengenbacher M, Grode L, Hesselting AC, et al. The BCG replacement vaccine VPM1002: from drawing board to clinical trial. *Expert Rev Vaccines* (2014) 13:619–30. doi:10.1586/14760584.2014.905746
 17. Desel C, Dorhoi A, Banderhann S, Grode L, Eisele B, Kaufmann SH. Recombinant BCG DeltaureC hly+ induces superior protection over parental BCG by stimulating a balanced combination of type 1 and type 17 cytokine responses. *J Infect Dis* (2011) 204:1573–84. doi:10.1093/infdis/jir592
 18. Saiga H, Nieuwenhuizen N, Gengenbacher M, Koehler AB, Schuerer S, Moura-Alves P, et al. The recombinant BCG deltaureC:hly vaccine targets the AIM2 inflammasome to induce autophagy and inflammation. *J Infect Dis* (2015) 211:1831–41. doi:10.1093/infdis/jiu675
 19. Loxton AG, Knaul JK, Grode L, Gutschmidt A, Meller C, Eisele B, et al. Safety and immunogenicity of the recombinant *Mycobacterium bovis* BCG vaccine VPM1002 in HIV-unexposed newborn infants in South Africa. *Clin Vaccine Immunol* (2017) 24(2):e439–416. doi:10.1128/CI.00439-16
 20. Grode L, Ganoza CA, Brohm C, Weiner J III, Eisele B, Kaufmann SH. Safety and immunogenicity of the recombinant BCG vaccine VPM1002 in a phase 1 open-label randomized clinical trial. *Vaccine* (2013) 31:1340–8. doi:10.1016/j.vaccine.2012.12.053
 21. Malito E, Faleri A, Lo Surdo P, Veggi D, Maruggi G, Grassi E, et al. Defining a protective epitope on factor H binding protein, a key meningococcal virulence factor and vaccine antigen. *Proc Natl Acad Sci U S A* (2013) 110:3304–9. doi:10.1073/pnas.1222845110
 22. Faleri A, Santini L, Brier S, Pansegrau W, Lo Surdo P, Scarselli M, et al. Two cross-reactive monoclonal antibodies recognize overlapping epitopes on *Neisseria meningitidis* factor H binding protein but have different functional properties. *FASEB J* (2014) 28:1644–53. doi:10.1096/fj.13-239012
 23. Malito E, Biancucci M, Faleri A, Ferlenghi I, Scarselli M, Maruggi G, et al. Structure of the meningococcal vaccine antigen NadA and epitope mapping of a bactericidal antibody. *Proc Natl Acad Sci U S A* (2014) 111:17128–33. doi:10.1073/pnas.1419686111
 24. Ciferri C, Chandramouli S, Donnarumma D, Nikitin PA, Cianfrocco MA, Gerrein R, et al. Structural and biochemical studies of HCMV gH/gL/gO and pentamer reveal mutually exclusive cell entry complexes. *Proc Natl Acad Sci U S A* (2015) 112:1767–72. doi:10.1073/pnas.1424818112
 25. Ciferri C, Chandramouli S, Leitner A, Donnarumma D, Cianfrocco MA, Gerrein R, et al. Antigenic characterization of the HCMV gH/gL/gO and pentamer cell entry complexes reveals binding sites for potentially neutralizing human antibodies. *PLoS Pathog* (2015) 11:e1005230. doi:10.1371/journal.ppat.1005230
 26. Bertoldi I, Faleri A, Galli B, Lo Surdo P, Liguori A, Norais N, et al. Exploiting chimeric human antibodies to characterize a protective epitope of *Neisseria adhesin A*, one of the Bexsero vaccine components. *FASEB J* (2016) 30:93–101. doi:10.1096/fj.15-273813
 27. Cariccio VL, Domina M, Benfatto S, Venza M, Venza I, Faleri A, et al. Phage display revisited: epitope mapping of a monoclonal antibody directed against *Neisseria meningitidis* adhesin A using the PROFILER technology. *MAbs*. (2016) 8:741–50. doi:10.1080/19420862.2016.1158371
 28. Pirrone GF, Iacob RE, Engen JR. Applications of hydrogen/deuterium exchange MS from 2012 to 2014. *Anal Chem* (2015) 87:99–118. doi:10.1021/ac5040242
 29. Baerga-Ortiz A, Hughes CA, Mandell JG, Komives EA. Epitope mapping of a monoclonal antibody against human thrombin by H/D-exchange mass spectrometry reveals selection of a diverse sequence in a highly conserved protein. *Protein Sci* (2002) 11:1300–8. doi:10.1110/ps.4670102
 30. Goodnow CC, Vinuesa CG, Randall KL, Mackay F, Brink R. Control systems and decision making for antibody production. *Nat Immunol* (2010) 11:681–8. doi:10.1038/ni.1900
 31. Crotty S. Follicular helper CD4 T cells (TFH). *Annu Rev Immunol* (2011) 29:621–63. doi:10.1146/annurev-immunol-031210-101400
 32. Shulman Z, Gitlin AD, Targ S, Jankovic M, Pasqual G, Nussenzweig MC, et al. T follicular helper cell dynamics in germinal centers. *Science* (2013) 341:673–7. doi:10.1126/science.1241680
 33. Benteibibel SE, Lopez S, Obermoser G, Schmitt N, Mueller C, Harrod C, et al. Induction of ICOS+CXCR3+CXCR5+ TH cells correlates with antibody responses to influenza vaccination. *Sci Transl Med* (2013) 5:176ra132. doi:10.1126/scitranslmed.3005191
 34. Schmitt N, Benteibibel SE, Ueno H. Phenotype and functions of memory Tfh cells in human blood. *Trends Immunol* (2014) 35:436–42. doi:10.1016/j.it.2014.06.002
 35. Spensieri F, Borgogni E, Zedda L, Bardelli M, Buricchi F, Volpini G, et al. Human circulating influenza-CD4+ ICOS1+IL-21+ T cells expand after vaccination, exert helper function, and predict antibody responses. *Proc Natl Acad Sci U S A* (2013) 110:14330–5. doi:10.1073/pnas.1311998110
 36. Spensieri F, Siena E, Borgogni E, Zedda L, Cantisani R, Chiappini N, et al. Early rise of blood T follicular helper cell subsets and baseline immunity as predictors of persisting late functional antibody responses to vaccination in humans. *PLoS One* (2016) 11:e0157066. doi:10.1371/journal.pone.0157066
 37. Sallusto F. Heterogeneity of human CD4(+) T cells against microbes. *Annu Rev Immunol* (2016) 34:317–34. doi:10.1146/annurev-immunol-032414-112056
 38. Sallusto F, Lanzavecchia A. Heterogeneity of CD4+ memory T cells: functional modules for tailored immunity. *Eur J Immunol* (2009) 39:2076–82. doi:10.1002/eji.200939722
 39. Becattini S, Latorre D, Mele F, Foglierini M, De Gregorio C, Cassotta A, et al. T cell immunity. Functional heterogeneity of human memory CD4(+) T cell clones primed by pathogens or vaccines. *Science* (2015) 347:400–6. doi:10.1126/science.1260668
 40. Acosta-Rodriguez EV, Napolitani G, Lanzavecchia A, Sallusto F. Interleukins 1beta and 6 but not transforming growth factor-beta are essential for the differentiation of interleukin 17-producing human T helper cells. *Nat Immunol* (2007) 8:942–9. doi:10.1038/ni1496
 41. Corti D, Voss J, Gamblin SJ, Codoni G, Macagno A, Jarrossay D, et al. A neutralizing antibody selected from plasma cells that binds to group 1 and group 2 influenza A hemagglutinins. *Science* (2011) 333:850–6. doi:10.1126/science.1205669
 42. Pappas L, Foglierini M, Piccoli L, Kallewaard NL, Turrini F, Silacci C, et al. Rapid development of broadly influenza neutralizing antibodies through redundant mutations. *Nature* (2014) 516:418–22. doi:10.1038/nature13764
 43. Lira SA. A passport into the lymph node. *Nat Immunol* (2005) 6:866–8. doi:10.1038/ni0905-866
 44. Bachelier F, Ben-Baruch A, Burkhardt AM, Combadiere C, Farber JM, Graham GJ, et al. International Union of Basic and Clinical Pharmacology.

- [corrected]. LXXXIX. Update on the extended family of chemokine receptors and introducing a new nomenclature for atypical chemokine receptors. *Pharmacol Rev* (2014) 66:1–79. doi:10.1124/pr.113.007724
45. Gouwy M, Schiraldi M, Struyf S, Van Damme J, Uguccioni M. Possible mechanisms involved in chemokine synergy fine tuning the inflammatory response. *Immunol Lett* (2012) 145:10–4. doi:10.1016/j.imlet.2012.04.005
 46. Schiraldi M, Raucci A, Munoz LM, Livoti E, Celona B, Venereau E, et al. HMGB1 promotes recruitment of inflammatory cells to damaged tissues by forming a complex with CXCL12 and signaling via CXCR4. *J Exp Med* (2012) 209:551–63. doi:10.1084/jem.20111739
 47. Venereau E, Schiraldi M, Uguccioni M, Bianchi ME. HMGB1 and leukocyte migration during trauma and sterile inflammation. *Mol Immunol* (2013) 55:76–82. doi:10.1016/j.molimm.2012.10.037
 48. Cecchinato V, D'Agostino G, Raeli L, Uguccioni M. Chemokine interaction with synergy-inducing molecules: fine tuning modulation of cell trafficking. *J Leukoc Biol* (2016) 99:851–5. doi:10.1189/jlb.1MR1015-457R
 49. Proudfoot AE, Uguccioni M. Modulation of chemokine responses: synergy and cooperativity. *Front Immunol* (2016) 7:183. doi:10.3389/fimmu.2016.00183
 50. Cecchinato V, Bernasconi E, Speck RF, Proietti M, Sauermann U, D'Agostino G, et al. Impairment of CCR6+ and CXCR3+ Th cell migration in HIV-1 infection is rescued by modulating actin polymerization. *J Immunol* (2017) 198:184–95. doi:10.4049/jimmunol.1600568
 51. Brechley JM, Price DA, Schacker TW, Asher TE, Silvestri G, Rao S, et al. Microbial translocation is a cause of systemic immune activation in chronic HIV infection. *Nat Med* (2006) 12:1365–71. doi:10.1038/nm1511
 52. Marchetti G, Tincati C, Silvestri G. Microbial translocation in the pathogenesis of HIV infection and AIDS. *Clin Microbiol Rev* (2013) 26:2–18. doi:10.1128/CMR.00050-12
 53. Wang C, Kang SG, Lee J, Sun Z, Kim CH. The roles of CCR6 in migration of Th17 cells and regulation of effector T-cell balance in the gut. *Mucosal Immunol* (2009) 2:173–83. doi:10.1038/mi.2008.84
 54. Baenziger S, Heikenwalder M, Johansen P, Schlaepfer E, Hofer U, Miller RC, et al. Triggering TLR7 in mice induces immune activation and lymphoid system disruption, resembling HIV-mediated pathology. *Blood* (2009) 113:377–88. doi:10.1182/blood-2008-04-151712
 55. Dominguez-Villar M, Gautron AS, De Marcken M, Keller MJ, Hafler DA. TLR7 induces anergy in human CD4(+) T cells. *Nat Immunol* (2015) 16:118–28. doi:10.1038/ni.3036
 56. Jacobson JM, Bosinger SE, Kang M, Belaunzaran-Zamudio P, Matining RM, Wilson CC, et al. The effect of chloroquine on immune activation and interferon signatures associated with HIV-1. *AIDS Res Hum Retroviruses* (2016) 32:636–47. doi:10.1089/AID.2015.0336
 57. Arnold CR, Wolf J, Brunner S, Herndler-Brandstetter D, Grubeck-Loebenstein B. Gain and loss of T cell subsets in old age – age-related reshaping of the T cell repertoire. *J Clin Immunol* (2011) 31:137–46. doi:10.1007/s10875-010-9499-x
 58. Singh T, Newman AB. Inflammatory markers in population studies of aging. *Ageing Res Rev* (2011) 10:319–29. doi:10.1016/j.arr.2010.11.002
 59. Black S, De Gregorio E, Rappuoli R. Developing vaccines for an aging population. *Sci Transl Med* (2015) 7:281s288. doi:10.1126/scitranslmed.aaa0722
 60. Mosca F, Tritto E, Muzzi A, Monaci E, Bagnoli F, Iavarone C, et al. Molecular and cellular signatures of human vaccine adjuvants. *Proc Natl Acad Sci U S A* (2008) 105:10501–6. doi:10.1073/pnas.0804699105
 61. Garlanda C, Bottazzi B, Bastone A, Mantovani A. Pentraxins at the cross-roads between innate immunity, inflammation, matrix deposition, and female fertility. *Annu Rev Immunol* (2005) 23:337–66. doi:10.1146/annurev.immunol.23.021704.115756
 62. Bottazzi B, Inforzato A, Messa M, Barbagallo M, Magrini E, Garlanda C, et al. The pentraxins PTX3 and SAP in innate immunity, regulation of inflammation and tissue remodelling. *J Hepatol* (2016) 64:1416–27. doi:10.1016/j.jhep.2016.02.029
 63. Jaillon S, Peri G, Delneste Y, Fremaux I, Doni A, Moalli F, et al. The humoral pattern recognition receptor PTX3 is stored in neutrophil granules and localizes in extracellular traps. *J Exp Med* (2007) 204:793–804. doi:10.1084/jem.20061301
 64. Jeannin P, Bottazzi B, Sironi M, Doni A, Rusnati M, Presta M, et al. Complexity and complementarity of outer membrane protein A recognition by cellular and humoral innate immunity receptors. *Immunity* (2005) 22:551–60. doi:10.1016/j.immuni.2005.03.008
 65. Moalli F, Doni A, Deban L, Zelante T, Zagarella S, Bottazzi B, et al. Role of complement and Fc{gamma} receptors in the protective activity of the long pentraxin PTX3 against *Aspergillus fumigatus*. *Blood* (2010) 116:5170–80. doi:10.1182/blood-2009-12-258376
 66. Doni A, Garlanda C, Bottazzi B, Meri S, Garred P, Mantovani A. Interactions of the humoral pattern recognition molecule PTX3 with the complement system. *Immunobiology* (2012) 217:1122–8. doi:10.1016/j.imbio.2012.07.004
 67. Bonavita E, Gentile S, Rubino M, Maina V, Papait R, Kunderfranco P, et al. PTX3 is an extrinsic oncosuppressor regulating complement-dependent inflammation in cancer. *Cell* (2015) 160:700–14. doi:10.1016/j.cell.2015.01.004
 68. Doni A, Musso T, Morone D, Bastone A, Zambelli V, Sironi M, et al. An acidic microenvironment sets the humoral pattern recognition molecule PTX3 in a tissue repair mode. *J Exp Med* (2015) 212:905–25. doi:10.1084/jem.20141268
 69. Bottazzi B, Santini L, Savino S, Giuliani MM, Duenas Diez AI, Mancuso G, et al. Recognition of *Neisseria meningitidis* by the long pentraxin PTX3 and its role as an endogenous adjuvant. *PLoS One* (2015) 10:e0120807. doi:10.1371/journal.pone.0120807
 70. Chorny A, Casas-Recasens S, Sintès J, Shan M, Polentarutti N, Garcia-Escudero R, et al. The soluble pattern recognition receptor PTX3 links humoral innate and adaptive immune responses by helping marginal zone B cells. *J Exp Med* (2016) 213:2167–85. doi:10.1084/jem.20150282
 71. Reading PC, Bozza S, Gilbertson B, Tate M, Moretti S, Job ER, et al. Antiviral activity of the long chain pentraxin PTX3 against influenza viruses. *J Immunol* (2008) 180:3391–8. doi:10.4049/jimmunol.180.5.3391
 72. Olesen R, Wejse C, Velez DR, Bisseye C, Sodemann M, Aaby P, et al. DC-SIGN (CD209), pentraxin 3 and vitamin D receptor gene variants associate with pulmonary tuberculosis risk in West-Africans. *Genes Immun* (2007) 8:456–67. doi:10.1038/sj.gene.6364410
 73. Chiarini M, Sabelli C, Melotti P, Garlanda C, Savoldi G, Mazza C, et al. PTX3 genetic variations affect the risk of *Pseudomonas aeruginosa* airway colonization in cystic fibrosis patients. *Genes Immun* (2010) 11:665–70. doi:10.1038/gene.2010.41
 74. Cunha C, Aversa F, Lacerda JF, Busca A, Kurzai O, Grube M, et al. Genetic PTX3 deficiency and aspergillosis in stem-cell transplantation. *N Eng J Med* (2014) 370:421–32. doi:10.1056/NEJMoa1211161
 75. Jaillon S, Moalli F, Ragnarsdottir B, Bonavita E, Puthia M, Riva F, et al. The humoral pattern recognition molecule PTX3 is a key component of innate immunity against urinary tract infection. *Immunity* (2014) 40:621–32. doi:10.1016/j.immuni.2014.02.015
 76. Wojtowicz A, Lecompte TD, Bibert S, Manuel O, Rueger S, Berger C, et al. PTX3 polymorphisms and invasive mold infections after solid organ transplant. *Clin Infect Dis* (2015) 61:619–22. doi:10.1093/cid/civ386
 77. Fisher CE, Hohl TM, Fan W, Storer BE, Levine DM, Zhao LP, et al. Validation of single nucleotide polymorphisms in invasive aspergillosis following hematopoietic cell transplantation. *Blood* (2017) 129:2693–701. doi:10.1182/blood-2016-10-743294

Conflict of Interest Statement: The authors declare that the research was conducted in the absence of any commercial or financial relationships that could be construed as a potential conflict of interest.

Copyright © 2017 Haks, Bottazzi, Cecchinato, De Gregorio, Del Giudice, Kaufmann, Lanzavecchia, Lewis, Maertzdorf, Mantovani, Sallusto, Sironi, Uguccioni and Ottenhoff. This is an open-access article distributed under the terms of the Creative Commons Attribution License (CC BY). The use, distribution or reproduction in other forums is permitted, provided the original author(s) or licensor are credited and that the original publication in this journal is cited, in accordance with accepted academic practice. No use, distribution or reproduction is permitted which does not comply with these terms.