

ARTICLE

Received 12 Aug 2016 | Accepted 3 Oct 2016 | Published 28 Nov 2016

DOI: 10.1038/ncomms13466

OPEN

IL-12 protects from psoriasiform skin inflammation

Paulina Kulig¹, Stephanie Musiol², Sandra Nicole Freiberger³, Bettina Schreiner¹, Gabor Gyölvézi⁴, Giancarlo Russo⁵, Stanislav Pantelyushin¹, Kenji Kishihara⁶, Francesca Alessandrini², Thomas Kündig³, Federica Sallusto⁴, Günther F.L. Hofbauer³, Stefan Haak^{2,*} & Burkhard Becher^{1,*}

Neutralization of the common p40-subunit of IL-12/23 in psoriasis patients has led to a breakthrough in the management of moderate to severe disease. Aside from neutralizing IL-23, which is thought to be responsible for the curative effect, anti-p40 therapy also interferes with IL-12 signalling and type 1 immunity. Here we dissect the individual contribution of these two cytokines to the formation of psoriatic lesions and understand the effect of therapeutic co-targeting of IL-12 and IL-23 in psoriasis. Using a preclinical model for psoriatic plaque formation we show that IL-12, in contrast to IL-23, has a regulatory function by restraining the invasion of an IL-17-committed $\gamma\delta$ T ($\gamma\delta$ T17) cell subset. We discover that IL-12 receptor signalling in keratinocytes initiates a protective transcriptional programme that limits skin inflammation, suggesting that collateral targeting of IL-12 by anti-p40 monoclonal antibodies is counterproductive in the therapy of psoriasis.

¹Institute of Experimental Immunology, University of Zurich, 8057 Zurich, Switzerland. ²Experimental Immunology Unit, Centre of Allergy and Environment (ZAUM), Technical University of Munich and Helmholtz Centre Munich, 80802 Munich, Germany. ³Department of Dermatology, University Hospital Zurich, 8091 Zurich, Switzerland. ⁴Institute for Research in Biomedicine, Cellular Immunology, 6500 Bellinzona, Switzerland. ⁵Functional Genomics Center Zurich, University of Zurich and ETH Zurich, 8057 Zurich, Switzerland. ⁶Department of Immunology, Faculty of Pharmaceutical Sciences, Nagasaki International University, 859-3298 Nagasaki, Japan. * These authors contributed equally to this work. Correspondence and requests for materials should be addressed to S.H. (email: stefan.haak@tum.de) or to B.B. (email: becher@immunology.uzh.ch).

Pсориаз is a chronic relapsing-remitting inflammatory skin disease that develops in genetically predisposed individuals after an unknown initial environmental, pathogenic or internal trigger. It is characterized by thickened epidermis (acanthosis), a result of keratinocyte hyper-proliferation, dysregulated keratinocyte differentiation (for example, parakeratosis), increased vascularity and accumulation of inflammatory infiltrates of T cells, neutrophils and dendritic cells¹. As T helper (T_H)-17, T_H22 and T_H1 cells are found in psoriatic lesions², current understanding of the disease pathogenicity proposes a model in which activated dendritic cells and macrophages express IL-12 and IL-23, which polarize autoreactive T cells into their subsequent effector phenotype³. As IL-12 and IL-23 are detected in psoriatic lesions^{4,5}, targeting both cytokines concomitantly (through neutralization of the common IL-12/23p40 subunit) may have a synergistic therapeutic effect. Indeed, two anti-IL-12/23p40 monoclonal antibodies (mAbs; ustekinumab and briakinumab) have been effective in the treatment of psoriasis vulgaris, and ustekinumab is now registered for clinical use^{6–9}.

However, data from mouse models as well as clinical studies demonstrates the IL-23/IL-17 axis to be the dominant pathway in the pathogenesis of the disease¹⁰. Repeated intradermal injections of IL-23 in mice led to development of a psoriasiform inflammatory phenotype¹¹, and IL-23-driven effector cytokines, IL-17A, IL-17F and IL-22, have been described as important factors in psoriatic plaque formation^{12,13}. Moreover, genome-wide associated studies point at several genes of the IL-23 pathway, such as *IL23R*, *IL12b* and *IL23a*, as risk factors for psoriasis¹⁴. Although T_H17 cells are implicated as effector cells in psoriasis, data generated in the Aldara-induced psoriatic plaque formation model show that psoriatic lesion development can be independent of $\alpha\beta$ T cells, but relies on the activity of a specific subset of $\gamma\delta$ T17 cells discriminated by their V γ 4⁺ T-cell receptor (TCR) (nomenclature according to Heilig and Tonegawa)¹⁵. In concert with type 3 innate lymphoid cells, $\gamma\delta$ T cells are the major source of IL-17A, IL-17F and IL-22 in the inflamed skin¹⁶. Innate-like lymphocytes constitutively express high levels of the IL-23 receptor^{12,17}, making them immediate responders to IL-23 and therefore suggesting a potential role in lesion formation. IL-17A-neutralizing antibodies ixekizumab and secukinumab, as well as an IL-17A receptor-blocking antibody, brodalumab, have successfully been tested in psoriasis patients^{18–20}. First published results showed strong clinical improvement and strengthen the notion that the IL-23/IL-17 axis is essential in the pathogenesis of psoriasis. Moreover, a clinical study on anti-IL-23p19 mAb (guselkumab) confirmed a pathogenic role for de-regulated IL-23 in psoriasis²¹.

Whereas IL-23p19 and IL-23p40 transcripts have been shown to be increased in psoriatic lesions, IL-12p35 was not²². IL-12 and IL-23 are structurally related and mainly expressed by activated dendritic cells and macrophages. Despite their similarities, both cytokines trigger vastly divergent immunological pathways. IL-12 is an important factor for the differentiation of naive T cells into interferon- γ (IFN- γ)-producing T_H1 cells, whereas IL-23 plays a role in sustenance of T_H17 responses^{23,24}. It has been shown that neutralization of IL-12 leads to the amelioration of psoriasis-like skin disorder in mice. However, the antibody used was targeting the common p40 subunit, thus neutralizing both IL-12 and IL-23 (ref. 25). The therapeutic activity of the p40-specific antibody is possibly due to the inhibition of IL-23 signalling pathway and not IL-12 (ref. 26). Nonetheless, the presence of IL-12 and IL-12-induced factors has been reported in human psoriatic lesions, which suggests their potential involvement in disease pathology^{27,28}. The collateral inhibition of IL-12 and its potential affect on psoriasis is currently under discussion, but the actual

contribution of IL-12 to the formation of psoriasiform lesions has never been addressed. Clinical studies suggest a superior efficacy through neutralization of the IL-23/IL-17 axis over blockade of IL-12/23p40 (refs 29–31). The aim of this study is to compare the individual roles of IL-12 and IL-23 in the pathophysiology of psoriatic plaque formation *in vivo*. We show that IL-12 opposes the pathogenic function of IL-23 in psoriatic plaque formation by signalling to the local stroma thereby restricting the cellular niche for type 17 T-cell accumulation. Our findings correct the prevailing view that IL-12 serves a primarily pro-psoriatic function during psoriatic plaque formation.

Results

Divergent roles of IL-12 and IL-23 in psoriatic inflammation.

Equally to the human disease, psoriatic lesions induced by topical Aldara treatment of mice can be reduced by application of neutralizing anti-p40 mAbs¹⁶. Psoriatic plaque formation is also greatly decreased in mice deficient in p40 (*Il12b*^{−/−}) (Supplementary Fig. 1). Correspondingly, critical markers of psoriasiform inflammation in this model, such as neutrophil invasion and the accumulation of IL-17A-secreting V γ 4⁺ $\gamma\delta$ T cells in the lesions were reduced (Supplementary Fig. 2). To clarify the individual contributions of IL-12 and IL-23 to plaque formation we monitored the clinical disease course in mice deficient in the subunit specific to IL-12 (p35, *Il12a*^{−/−}), its receptor (*Il12rb2*^{−/−}) and IL-23 (p19, *Il23a*^{−/−}). Whereas IL-12 is critical for type 1 immune responses, which in turn are thought to contribute to plaque formation, *Il12a*^{−/−} mice (unaltered IL-23 signalling) developed significantly more severe inflammation compared with wild-type (WT) mice (Fig. 1a). Mice lacking the IL-12-specific receptor subunit (*Il12rb2*^{−/−}), likewise, developed more severe lesions (Fig. 1b and Supplementary Fig. 1), pointing towards a regulatory role of IL-12 in psoriasiform lesion formation. Of note, when we compared the skin pathology of IL-23-deficient mice, *Il12b*^{−/−} (lacking IL-12 and IL-23) and *Il23a*^{−/−} (only lacking IL-23), we also observed a trend towards a protective effect of IL-12 (Supplementary Fig. 1).

The aggravated psoriatic plaque formation in mice defective in IL-12 signalling encompassed accelerated disease progression as well as more severe scaling and erythema, which suggested a compromised skin barrier function (Fig. 1c). For quantification of barrier integrity we measured trans-epithelial water loss (TEWL)³² confirming that in the absence of IL-12 signalling Aldara treatment resulted in a more pronounced breach of epithelial barrier (Fig. 1d). Histopathologic features were also more pronounced, and we observed increased frequencies of micro-abscesses, mostly consisting of neutrophils in the stratum corneum, and increased acanthosis, when IL-12 was absent (Fig. 1c,e,f). Cytofluorometric quantification validated the amplified recruitment of neutrophils into the skin of *Il12a*^{−/−} mice (Supplementary Fig. 3). The data collectively suggest that collateral targeting of IL-12 signalling in psoriasis could impede the therapeutic efficacy of targeting IL-23.

The prototype function of IL-12 is to induce type 1 responses and to determine whether the regulatory effect of IL-12 in plaque formation is mediated through IFN- γ , we induced Aldara lesions in *Ifng*^{−/−} mice (Supplementary Fig. 4). In contrast to *Il12a*^{−/−} mice, *Ifng*^{−/−} mice had a slightly less severe course of disease. This demonstrates two points: (a) the protective role of IL-12 works independent of IFN- γ ; and (b) IFN- γ itself is pro-inflammatory and promotes plaque formation.

To understand the molecular processes involved in the exaggeration of the psoriatic inflammatory response in IL-12 signalling-deficient compared with WT mice, transcript analysis

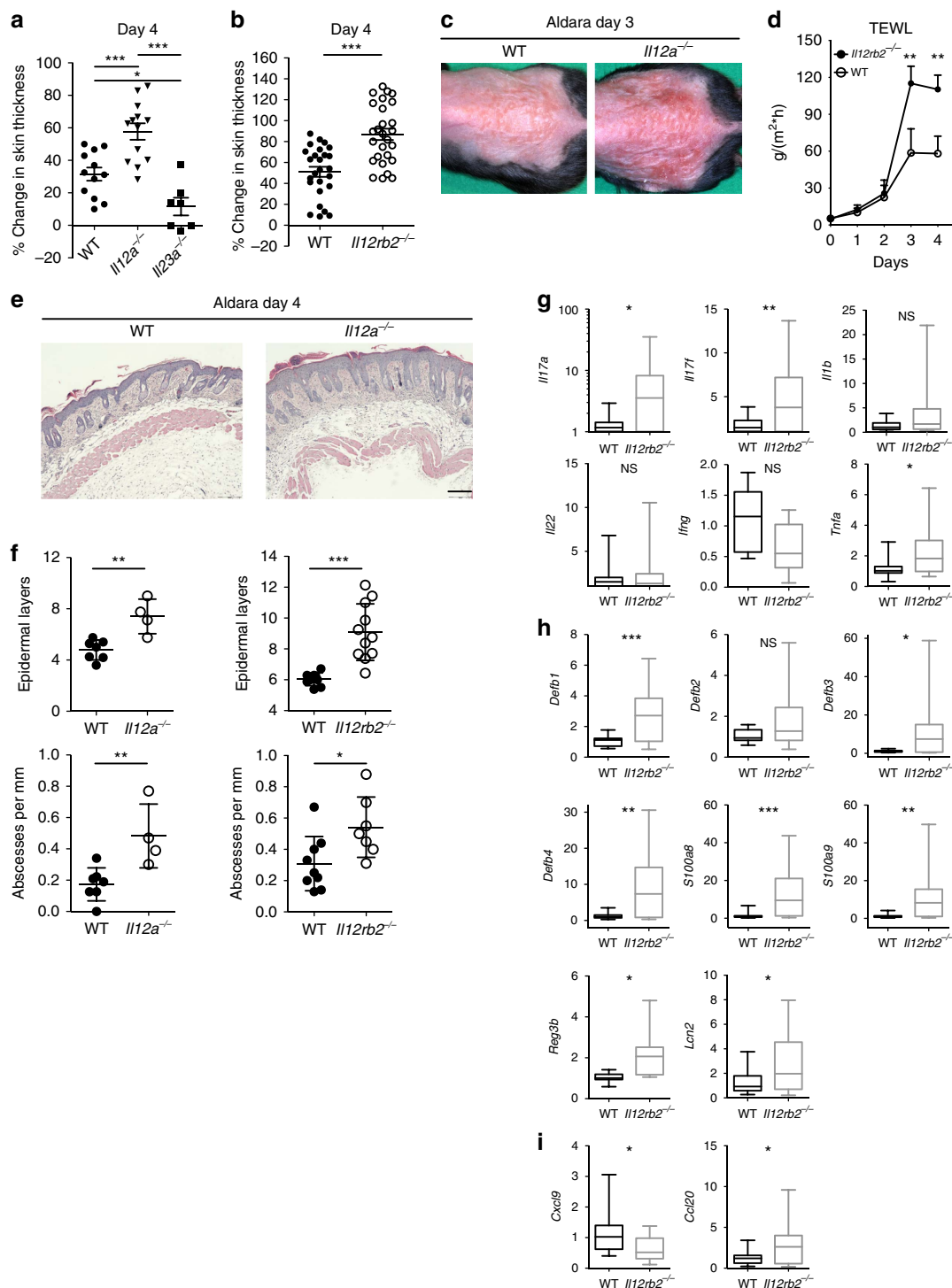


Figure 1 | Psoriatic plaque formation in Aldara-treated IL-12- and IL-23-deficient mice. (a,b) WT, *Il12a*^{-/-}, *Il23a*^{-/-} and *Il12rb2*^{-/-} mice were treated with Aldara for 6 days. Back skin lesions during peak disease (day 4) represented as per cent change in skin thickness compared with untreated skin on day 0. Cumulative representation of (a) four independent experiments ($n=12$ per WT, 13 per *Il12a*^{-/-} and 7 per *Il23a*^{-/-}, average mean \pm s.e.m.) and (b) nine independent experiments ($n=26$ per WT and 27 per *Il12rb2*^{-/-}, average mean \pm s.e.m.). (c) Representative photos taken on day 3 post Aldara treatment. (d) Measurement of TEWL in Aldara-treated back skin. Cumulative graph of four independent experiments ($n=9$ per WT and 10 per *Il12rb2*^{-/-}, average mean \pm s.e.m.). (e) Back skin sections stained with haematoxylin and eosin on day 4 post treatment; scale bar, 200 μ m. (f) Quantification of mouse skin histology: total counts of epidermal layers and skin abscesses. Cumulative graph of 2-3 independent experiments ($n=7-9$ per WT, 4 per *Il12a*^{-/-} and 7-11 per *Il12rb2*^{-/-}, average mean \pm s.e.m.). (g) Real-time quantitative PCR analysis of the whole skin on day 5 post treatment. Cumulative graphs of three independent experiments representing fold changes relative to the average WT expression levels of independent experiments ($n=10-18$ per WT and 10-15 per *Il12rb2*^{-/-}). Data shown as box plots visualizing the distribution by min and max (whiskers) the 25th-75th percentile (box) and median (band). Each data point represents an individual mouse. * $P<0.05$, ** $P<0.01$, *** $P<0.001$ (a,b) one way analysis of variance (ANOVA) with Bonferroni post test, (d) two-way ANOVA with Bonferroni post test, (f-i) unpaired two-tailed t -test. NS, not significant.

of the respective lesional skin was performed (Fig. 1g–i). Hallmark pathways of psoriasis were analysed and among the cytokines IL-17A and IL-17F were elevated in the absence of IL-12R β 2 (Fig. 1g). As expected, the inflamed skin of *Il12rb2*^{-/-} mice also showed a marked decrease of IFN- γ . We thus interrogated downstream transcripts relevant to psoriasiform inflammation induced by type 17 cytokines and found a range of antimicrobial peptides to be significantly upregulated (Fig. 1h). At the same time lipocalin 2 (*Lcn2*) revealed increased neutrophil activity in *Il12rb2*^{-/-} lesions, also indicative of an increased type 17 bias. Amongst relevant chemokines, CXCL9, which is dominantly controlled by IFN- γ , was found to be decreased (Fig. 1i). We found CCL20 to be significantly increased in the lesion of *Il12rb2*^{-/-} mice (Fig. 1i). CCL20 is the ligand of CCR6, a marker of dermato-tropic type 17 effector T cells, like $\gamma\delta$ T17 and T_H17 cells.

IL-12 controls invasion of V γ 6V δ 1⁺ $\gamma\delta$ T17 cells into the skin. IL-17A-producing V γ 4⁺ $\gamma\delta$ T cells are the main drivers of the psoriasiform inflammatory processes in the skin and an established marker for disease severity¹⁶. However, the skin of Aldara-treated *Il12rb2*^{-/-} mice had a distinct decrease in the frequency of these cells (Fig. 2a and Supplementary Fig. 5). The increase in total $\gamma\delta$ T cell infiltration was attained by the appearance of another $\gamma\delta$ T cell subpopulation. Those cells neither expressed the V γ 4 (characteristic for highly mobile IL-17A-secreting, skin-invading T cells) nor the V γ 5 chain of skin-resident dendritic epidermal T cells (DETCs). Whereas V γ 4⁺ V γ 5⁻ $\gamma\delta$ T cells can be found in low numbers in psoriatic lesion of WT mice, they accumulated in the inflamed skin of mice deficient in IL-12R β 2 (Fig. 2a). We identified the V γ 4⁻ V γ 5⁻ $\gamma\delta$ T cell population as the invariant $\gamma\delta$ T cell subset expressing V γ 6V δ 1⁺ TCR chains (Fig. 2b,c). This finding corresponds with

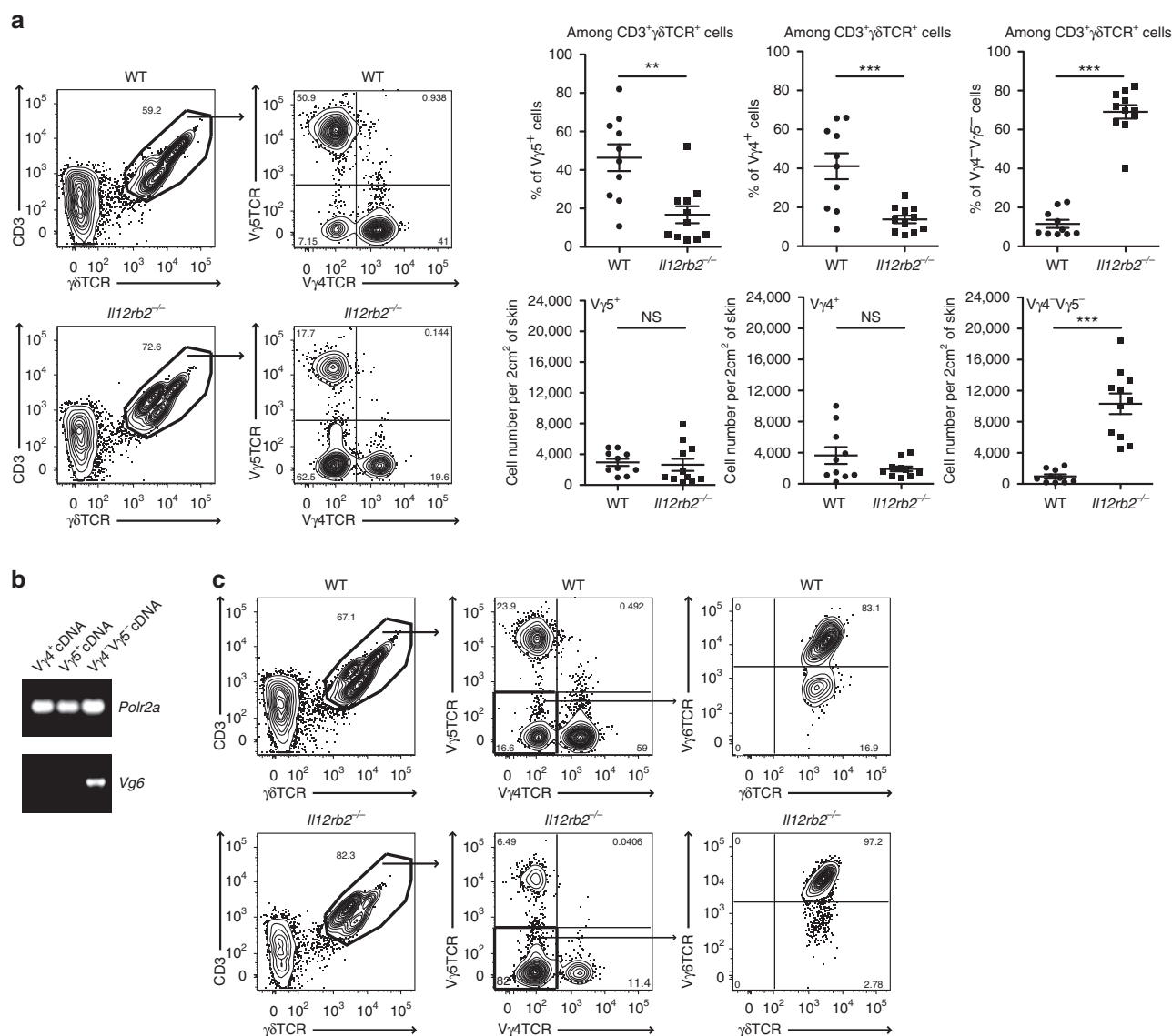


Figure 2 | $\gamma\delta$ T cell distribution in Aldara-treated skin of WT and *Il12rb2*^{-/-} animals. (a) Representative plots and cumulative graphs of three independent experiments depicting flow cytometry analysis of inflamed skin; cells were gated on CD45⁺ CD11b⁻ leukocytes and analysed for the presence of skin-resident and skin-infiltrating $\gamma\delta$ T cells ($n=10$ per WT and 11 per *Il12rb2*^{-/-}, average mean \pm s.e.m.); please find Supplementary Fig. 5 depicting representative flow cytometry gating strategy. (b) V γ 4⁺, V γ 5⁺ and V γ 4⁻ V γ 5⁻ $\gamma\delta$ T cells were sorted from *Il12a*^{-/-} Aldara-treated skin, and real-time quantitative PCR analysis for Vg6 expression was performed. *Polr2a* was used as a house-keeping gene. (c) Representative contour plot of skin-infiltrating V γ 6⁺ $\gamma\delta$ T cells on Aldara treatment. Each data point represents an individual mouse. ** $P<0.01$, *** $P<0.001$ ((a) unpaired two-tailed t -test). NS, not significant.

the recent report³³, in which $V\gamma 6^+$ T cells were described as an IL-17-secreting effector subset with skin-homing capacity. The overall levels of IL-17A in $Il12a^{-/-}$ and $Il12rb2^{-/-}$ mice were increased with $V\gamma 6^+$ $\gamma\delta$ T cells being main producers of IL-17A (Fig. 3a). To determine whether the elevated levels of IL-17A are responsible for the exacerbated psoriasiform response of $Il12rb2^{-/-}$ animals, we found that neutralization of IL-17A led to the reduction in skin thickness, improved epidermal integrity and reduced neutrophil invasion (Fig. 3b,c and Supplementary Fig. 6). Of note, the overall cell numbers of effector $V\gamma 4$ and $V\gamma 6$ $\gamma\delta$ T cells were not altered (Supplementary Fig. 6).

To address if $V\gamma 6^+$ T cell accumulation in the skin is directly coupled to IL-12 deficiency or rather a consequence of the exaggerated inflammation in the mutant mice ($Il12rb2^{-/-}$ and $Il12a^{-/-}$), we went back to the Aldara-treated $Il12b$ and $Il23a$ deficient mice, which both lack IL-23 and only differ in their deficiency and sufficiency of IL-12, respectively. Interestingly, we noticed that even in mice lacking IL-23 and thus, full-blown inflammation, we observed differences in $V\gamma 6^+$ T-cell accumulation suggesting that IL-12 regulates the $\gamma\delta$ T17 cells in the skin (Supplementary Fig. 7). To test if $V\gamma 6^+$ $\gamma\delta$ T17 cell accumulation is causative in the aggravation of the disease when IL-12 is absent, we bred $Vd1^{-/-}$ mice, which selectively lack functional $V\gamma 6V\delta 1^+$ T cells^{34,35}, on to $Il12rb2^{-/-}$ background. Lack of $V\gamma 6V\delta 1^+$ cells consistently reduced the exaggerated disease phenotype in IL-12R mutants (Fig. 3d), suggesting a pivotal role of the $V\gamma 6^+$ $\gamma\delta$ T17 cell subset in pathogenesis under the control of IL-12. This hyper-pathogenic potential of $V\gamma 6^+$ effector cells extends its biological relevance to non-mutant WT mice, as we noted a positive correlation between skin thickening—a robust clinical parameter of psoriatic plaque formation—and the ratio of $V\gamma 6^+$ effectors amongst the pool of dermal $\gamma\delta$ T cells in WT mice (Pearson's $r = 0.615$, $P = 0.0086$; Fig. 3e).

The p35 subunit is shared between two members of the IL-12 superfamily, IL-12 (p35/p40) and IL-35 (p35/EBI3). Although IL-35 has been demonstrated to have predominantly regulatory functions³⁶, $Ebi3^{-/-}$ mice did not phenocopy the aggravated pathology of IL-12 mutants, demonstrating that IL-12 and not IL-35 exerts protective functions in psoriasis (Supplementary Fig. 8). This was confirmed by local IL-12 administration, which reduced inflammation in $Il12a^{-/-}$ mice (Fig. 4a) but not in $Il12rb2^{-/-}$ mice (Fig. 4b). Correspondingly, IL-12 administration directly to the lesion diminished the invasion by $\gamma\delta$ T17 cells (Fig. 4c). We also treated WT mice with anti IL-12p70 heterodimer-specific neutralizing antibody, and observed increased skin thickness as well as decreased skin integrity (Fig. 4d,e). The absolute numbers of inflammatory infiltrates, including neutrophils, effector $\gamma\delta$ T cells and IL-17A-producing cells were also enhanced (Fig. 4f). The combination of these loss- and gain-of-function *in vivo* experiments led us to conclude that IL-12, which is produced within the inflammatory lesion, limits inflammation by restricting the numbers of pathogenic $\gamma\delta$ T17 cells.

IL-12 elicits a protective programme in keratinocytes. The IL-12R complex is expressed on certain subsets of natural killer (NK) cells, NK T cells, $\gamma\delta$ T cells and activated $\alpha\beta$ T cells³⁷. Here we show the regulation of $\gamma\delta$ T17 cell accumulation in the skin mediated by IL-12 signalling. Accordingly, we hypothesized a direct response of $\gamma\delta$ T17 cells to IL-12. For this, we determined $Il12rb2$ expression directly on skin-associated $\gamma\delta$ T cells ($V\gamma 4^+$, $V\gamma 6^+$ and $V\gamma 5^+$ subsets) sorted from psoriatic WT and $Il12rb2^{-/-}$ skin. As expected, we found high levels of $Il12rb2$ RNA in $V\gamma 5^+$ DETCs. However, we failed to detect $Il12rb2$

transcripts in the dermal $V\gamma 4^+$ and $V\gamma 6^+$ cell populations (Fig. 5a). IL-12 stimulation of DETC, similarly to T_H1 effector cells, induces a type 1 cytokine responses dominated by IFN- γ (ref. 38), which however did not mediate a protective effect of IL-12 in psoriatic plaque formation (Supplementary Fig. 4). Furthermore, DETC have been excluded from contributing to psoriatic plaque formation by a comprehensive study of Stockinger and colleagues using aryl hydrocarbon receptor mutant mice³⁹, based on the observation that cell intrinsic aryl hydrocarbon receptor deficiency in $\gamma\delta$ T cells leads to an almost complete absence of skin-resident DETCs while other dermal $\gamma\delta$ T cell populations are not affected^{40,41}. As we did not find a possible direct link between IL-12 and its effect on $\gamma\delta$ T cells, we screened the skin for alternative IL-12 responders. Keratinocytes actively participate in the regulation of immune responses in the psoriatic skin^{42,43}, and there are several reports demonstrating that keratinocytes are responsive to IL-12 (refs 44–46) and that IL-12R engagement activates both STAT-3 and STAT-4 in keratinocytes, which protects against ultraviolet-mediated skin damage⁴⁷.

We thus sorted CD49f^{high} keratinocytes from naive WT and $Il12rb2^{-/-}$ mice (Supplementary Fig. 9) and detected $Il12rb2$ transcripts (Fig. 5a). To determine whether the IL-12R expression by keratinocytes would explain the exacerbated disease phenotype of IL-12R-deficient mice, we generated bone marrow chimeras by transferring WT (together with neonatal thymocytes to provide $\gamma\delta$ T17 cells)¹⁷ into either WT or $Il12rb2^{-/-}$ recipients (Supplementary Fig. 10a). Aldara treatment resulted in increased skin inflammation when IL-12R was missing from the skin stroma (Fig. 5b). The majority of effector T cells present in the Aldara-treated skin were indeed of donor origin (Supplementary Fig. 10b). Again, we observed increased inflammation and leukocyte skin invasion by neutrophils and IL-17-producing T cells in the mice, where IL-12R was lacking in keratinocytes (Supplementary Fig. 10c).

These data open the possibility that in the context of psoriasiform lesion formation, not only lymphocytes but also the epidermal stroma has the capacity to directly respond to IL-12. To further elaborate on this important link and to translate our findings to the human skin, we examined clinical biopsies and found ample expression of IL-12R $\beta 2$ protein in human epidermis (Fig. 5c). Confocal microscopy further confirmed IL-12R $\beta 2$ co-localization with the keratinocyte marker K14 (Fig. 5d). To further ascertain the cellular identity of the IL-12R $\beta 2$ -bearing stroma, we expanded human primary keratinocytes *in vitro* and performed immunoblotting of the IL-12R $\beta 2$ protein. Keratinocytes had abundant IL-12R $\beta 2$ levels comparable to activated peripheral blood mononuclear cells (PBMCs), whereas no signal was detected in unstimulated human PBMCs or monocytes (Fig. 5e and Supplementary Fig. 11). Of note, we also found IL-12R $\beta 2$ expression in human psoriatic skin (Supplementary Fig. 12).

To gain unbiased insights into the molecular processes induced by IL-12 signalling in keratinocytes, we performed transcriptomic analysis by next-generation sequencing (NGS) of sorted keratinocytes from Aldara-treated WT and $Il12rb2^{-/-}$ animals, at a time point before the mice display differential disease development. We identified >1,000 significantly altered expression features between the groups, conforming to a stringent significance threshold ($P < 0.001$; Fig. 6a). Amongst the top 100 most significant differences between $Il12rb2^{-/-}$ (Aldara) and WT (Aldara), we found a broad range of factors closely associated with human psoriasis^{48,49} as well as mouse models of the disease, for example, involucrin (*Ivl*), late cornified envelope 3D (*Lce3d*), $\beta 14$ defensin (*Defb14*), matrix metalloproteinase 12 (*Mmp12*), IL-24 (*Il24*), serum amyloid A (*Saa3*), transforming growth

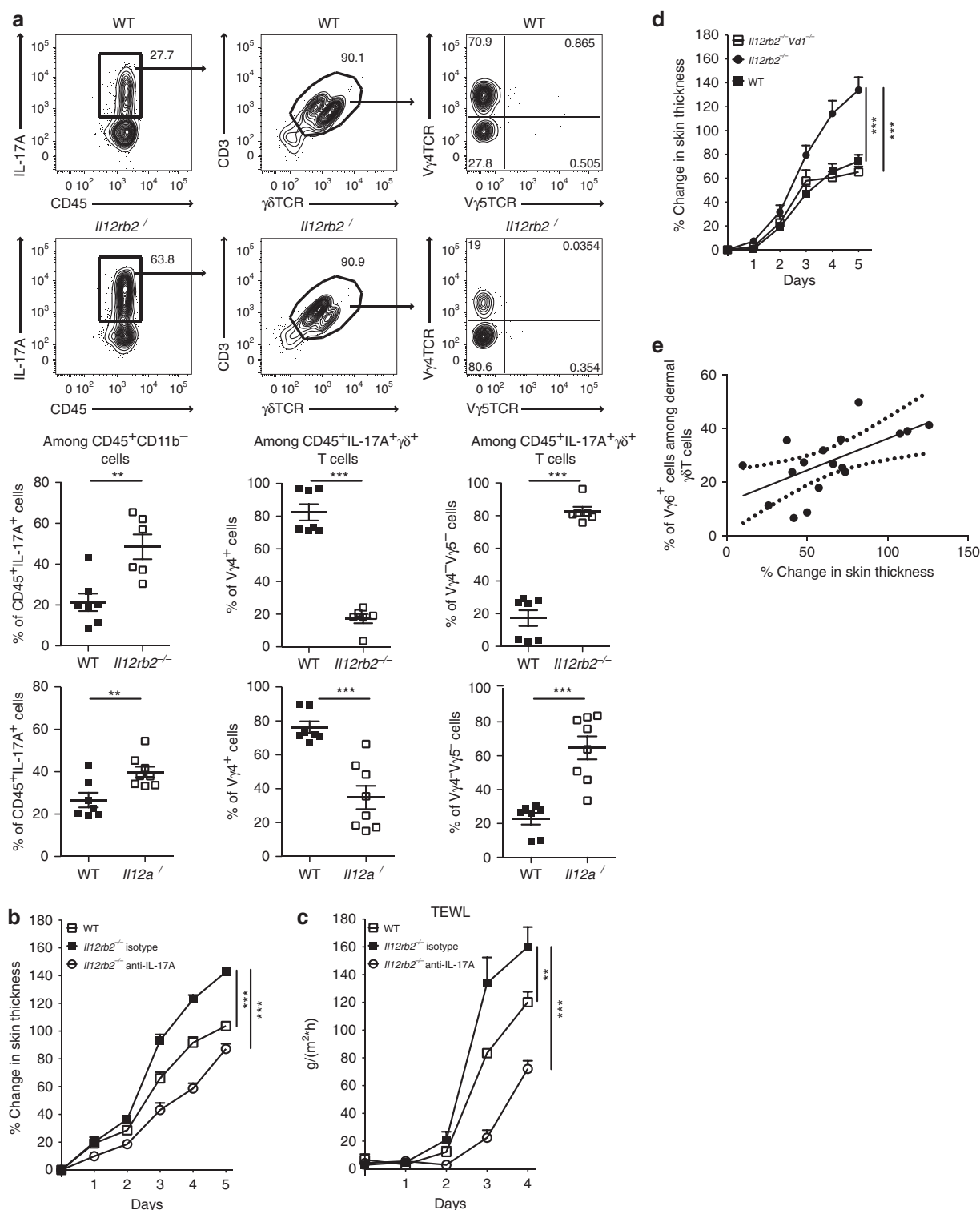
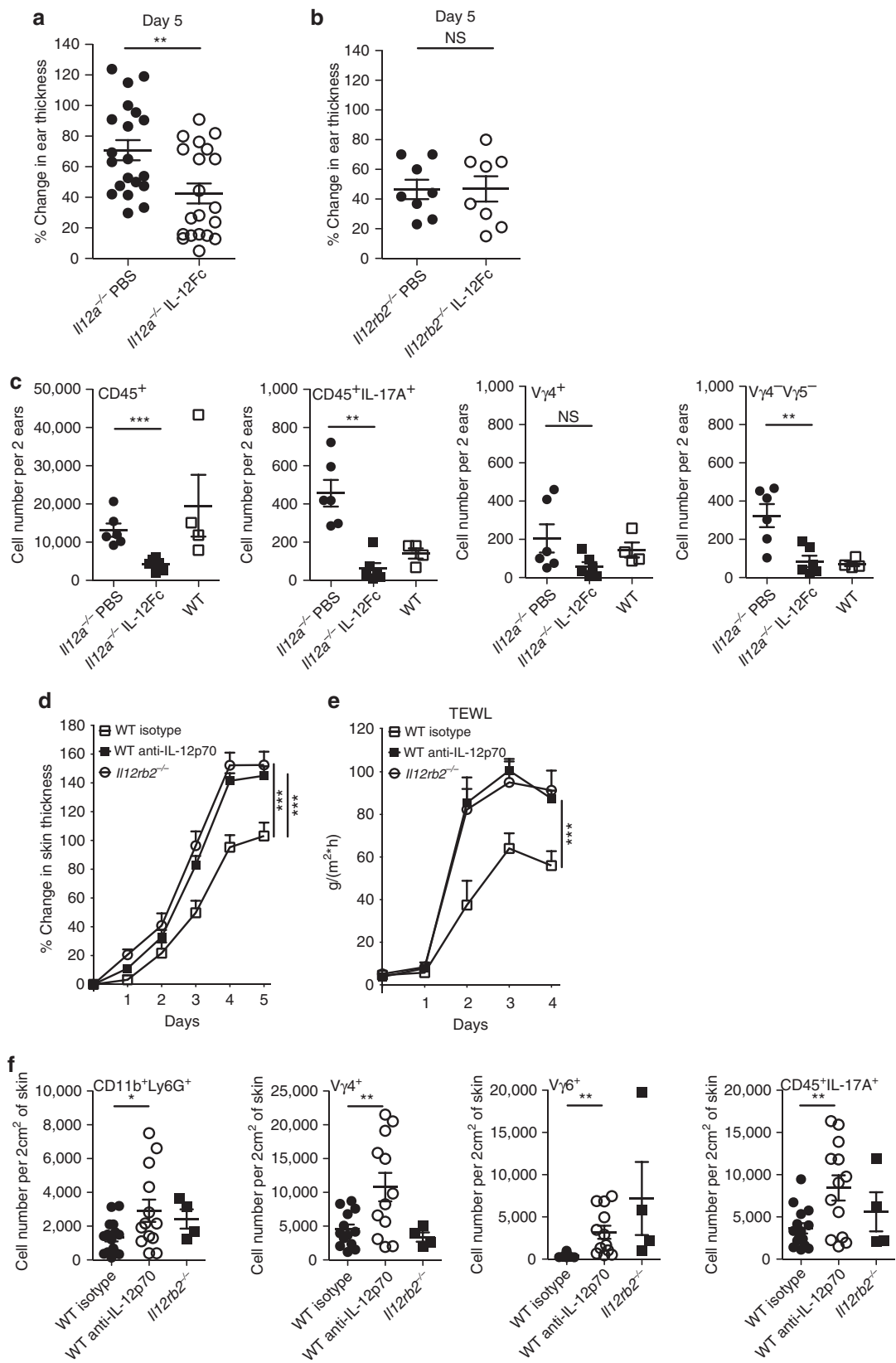


Figure 3 | Vγ6⁺ γδT17 exacerbate psoriasiform inflammation. WT, *Il12a*^{-/-}, *Il12rb2*^{-/-} and *Il12rb2*^{-/-} Vd1^{-/-} mice were treated with Aldara for 6 days. **(a)** Representative plots and cumulative graphs of two independent experiments depicting flow cytometry analysis of inflamed skin; cells were gated on CD45⁺CD11b⁻ leukocytes and analysed for the expression of IL-17A (*n* = 7 per WT, 6 per *Il12rb2*^{-/-} and 8 per *Il12a*^{-/-}, average mean ± s.e.m.). **(b,c)** Representative experiment out of three depicting psoriatic plaque formation in animals treated with neutralizing antibody against IL-17A. **(b)** Change in skin thickness compared with untreated skin on day 0 (*n* = 3 per WT, 4 per *Il12rb2*^{-/-} isotype and 5 per *Il12rb2*^{-/-} anti-IL-17A, average mean ± s.e.m.) and **(c)** measurement of TEWL in Aldara-treated back skin (*n* = 3 per WT, 4 per *Il12rb2*^{-/-} isotype and 5 per *Il12rb2*^{-/-} anti-IL-17A, average mean ± s.e.m.). **(d)** Back plaque formation represented as per cent change in skin thickness compared with untreated skin on day 0. Cumulative graph of five independent experiments (*n* = 17 per WT, 15 per *Il12rb2*^{-/-} and 12 per *Il12rb2*^{-/-} Vd1^{-/-}, average mean ± s.e.m.). **(e)** Pearson's correlation analysis of Vγ6⁺ γδT cells in inflamed back skin calculated as per cent of all dermal γδT cells and per cent change in epidermal thickening in WT mice (*n* = 17). Each data point represents an individual mouse. ***P* < 0.01, ****P* < 0.001 **(a)** unpaired two-tailed *t*-test, **(b-d)** two-way ANOVA with Bonferroni post test).

factor $\beta 2$ (*Tgfb2*) and different serin peptidase inhibitors (*Serpin*). Figure 6b summarizes an excerpt of factors typically associated with psoriasis overlapping with those detected here. The majority of transcriptional changes found in the comparison *Il12rb2*^{-/-} (Aldara) versus WT(Aldara) were in

gene families typically involved in tissue structure (Supplementary Fig. 13a), keratinocyte differentiation and basement membrane integrity (Supplementary Fig. 13b). Direct immune-related changes were smaller in number but highly significant. Besides inflammatory pathways generally active



in skin inflammation like arachidonic acid metabolism and transforming growth factor- β an over-representation of inflammatory elements of the IL-17 tissue response (granulocyte colony-stimulating factor, antimicrobial peptides, IL-19/24 and IL-6) as well as a response modulator (IL-17RD) enhancing neutrophil engagement were found enhanced in *Il12rb2*^{-/-} lesions (Supplementary Fig. 13c).

We next analysed the top 10% genes selected on high variance between the Aldara-treated groups (WT versus *Il12rb2*^{-/-}) and performed cluster- followed by Metacore analysis to determine the functional alterations elicited by IL-12 signalling (Fig. 6c and Supplementary Fig. 14). The result can be classified into three categories: transcripts (a) downregulated (clusters 5 and 6); (b) enhanced uniformly between the genetic groups (cluster 3); and (c) differentially regulated between the genetic groups (clusters 1, 2 and 4). Genes related to general cell metabolism and cell cycle (cluster 3) were hardly affected by IL-12 signalling in keratinocytes. Processes related to type 17 inflammation are drastically enhanced in the absence of IL-12 receptor (enriched in cluster 4; Supplementary Fig. 14), which is in agreement with the increased disease severity observed in these animals. Also, cell trafficking as well as tissue structure and remodelling (clusters 1 and 2; Supplementary Fig. 14) are affected. Unique to cluster 2 is that changes are confined to *Il12rb2*^{-/-} keratinocytes (Fig. 6c). This is of interest since the affected pathways/processes could be involved in opening and closing a cellular niche for $\gamma\delta$ T17 cell accumulation and consequentially elevated levels IL-17A within the psoriatic lesion.

We next tested if IL-12 elicits a response in primary human keratinocytes. As described previously, IL-12 alone does not significantly change the transcriptional profile of epidermal keratinocytes⁴⁷, hence we pre-activated them to simulate the inflammatory context *in vitro*. We found 942 genes to be differentially expressed when IL-12 was applied to keratinocytes pre-activated with TNF ($P < 0.05$, $\log_2FC > 0.5$ and < -0.5). A response to IL-12 was consistently found across donors (Fig. 6d). Enrichment analysis for biological processes regulated by IL-12 revealed several processes such as multicellular organismal development, system development or cytoskeleton rearrangement to be most prominently enhanced, which are processes typical downregulated in human psoriatic skin compared with healthy⁴⁹ (Fig. 6e). Interestingly, the processes found in this human Metacore analysis were similar to the ones found in clusters 2 and 4 of the mouse transcriptome (Supplementary Fig. 14), indicating that IL-12, indeed, could counter-regulate changes induced in the epidermal stroma inflicted by inflammatory stimuli.

To permit a deeper statistical analysis, we performed RNAseq on three samples of primary human keratinocytes per group (TNF versus TNF + IL-12) stimulated independently. It has been previously shown that *in vitro* stimulation of human keratinocytes mimics the transcriptional profile of the psoriatic epidermal stroma to some extent⁵⁰, however, the changes induced by IL-12

in this *in vitro* model were not comparable in strength to the *ex vivo* analysis of keratinocytes in the psoriatic lesion of the mouse model. Despite this limitation there was a clear counter-modulation of the psoriasiform transcriptional pattern induced by TNF (refs 49,50; Fig. 6f).

Discussion

Treatment of most chronic inflammatory diseases used to imply broad immunosuppression. For the treatment of plaque-like psoriasis this has categorically changed in the last 10 years, as we are currently experiencing a rapid evolution of cytokine-blocking drugs. The initial milestone achievement was blocking of TNF, set-up to counter a number of different auto-inflammatory disorders, psoriasis being one of them⁵¹. Whilst effective, drug-induced TNF depletion retains to some extent the disadvantage of former approaches of a generalized immunosuppression, as well as a quota of one-third of eventual non-responders. A critical step towards better therapeutic specificity was led by early preclinical data showing that targeting of IL-12p40 successfully prevents or curbs pathology in numerous models of chronic inflammatory disease, which resulted in the development of neutralizing mAbs for clinical application^{25,52}. Shortly after the discovery of IL-23 in 2003, however, it became apparent that the anti-p40 therapeutic approach inadvertently counteracted two major inflammatory pathways in parallel, IL-12 and IL-23. The predominant role of IL-23 in the pathogenesis of some chronic inflammatory disease, which was formerly claimed by IL-12, was first discovered in experimental autoimmune encephalomyelitis (EAE) a disease model for multiple sclerosis^{53–55}. Nonetheless, anti-p40 mAb therapy performed with unprecedented efficacy in treatment of plaque-like psoriasis for which it became FDA approved in 2009 (ustekinumab). For the treatment of psoriasis there is an on-going effort to increase the focus on the blockade of the type 17 inflammatory response, for example, by inhibition of IL-23p19 (refs 21,56) or IL-17 (refs 18–20), which in recent clinical trials exhibiting even higher efficacy than ustekinumab³⁰. As predicted from the findings in preclinical models, all clinical data available to date point towards a particularly monomorphic patho-mechanism behind psoriatic plaque formation dominated by an unrestrained IL-23/17 effector response in the skin. Consequentially, it seems that blocking IL-23 or even single IL-23 downstream effector molecules should be sufficient to effectively treat psoriatic lesions.

However, at present, anti-p40, inhibiting IL-12 and IL-23 signalling, is applied as standard care (ustekinumab) for moderate to severe psoriasis vulgaris in adults. Therapeutic blocking of IL-12/23p40 is well studied, and corresponding indications have been monitored in the clinical studies of the two anti-p40 mAbs, ustekinumab and briakinumab^{57–59}. Taken the long-term treatment perspective of those patients and in general the delicate

Figure 4 | IL-12 limits skin inflammation. (a–c) WT, *Il12a*^{-/-} and *Il12rb2*^{-/-} mice were treated with Aldara, 200 ng of IL-12Fc or PBS was injected every second day starting on day -1. (a,b) Ear skin inflammation on day 5 represented as a per cent change in skin thickness compared with untreated skin on day -1. Cumulative graphs of (a) four and (b) two independent experiments ($n = 20$ per *Il12a*^{-/-} and 8 per *Il12rb2*^{-/-}, average mean \pm s.e.m.). (c) Flow cytometry analysis of inflamed back skin; absolute numbers of skin-infiltrating CD45⁺ leukocytes, $V\gamma 4^- V\gamma 5^- \gamma\delta T$, $V\gamma 4^+ \gamma\delta T$ cells and CD45⁺ IL-17A⁺ leukocytes. Cumulative graphs of three independent experiments ($n = 6$ per *Il12a*^{-/-} and 4 per WT, average mean \pm s.e.m.). (d–f) WT and *Il12rb2*^{-/-} mice were treated with Aldara, 200 μ g of anti-IL-12p70 antibody or isotype control was injected every second day starting on day -1. (d,e) Cumulative graphs of four independent experiments depicting (d) per cent change in skin thickness compared with untreated skin on day 0 ($n = 8$ per WT isotype, 13 per WT anti-IL12p70 and 10 per *Il12rb2*^{-/-}, average mean \pm s.e.m.) and (e) measurement of TEWL in Aldara-treated back skin ($n = 8$ per WT isotype, 14 per WT anti-IL12p70 and 10 per *Il12rb2*^{-/-}, average mean \pm s.e.m.). (f) Flow cytometry analysis of inflamed back skin; absolute numbers of skin-infiltrating neutrophils, $V\gamma 4^+ \gamma\delta T$ cells, $V\gamma 6^+ \gamma\delta T$ cells and CD45⁺ IL-17A⁺ leukocytes. Cumulative graphs of three independent experiments ($n = 13$ per WT isotype, 12 per WT anti-IL12p70 and 4 per *Il12rb2*^{-/-}, average mean \pm s.e.m.). Each data point represents an individual (a,b) ear or (c,f) mouse. * $P < 0.05$, ** $P < 0.01$, *** $P < 0.001$ ((a–c,e,f) unpaired two-tailed *t*-test, (d) two-way ANOVA with Bonferroni post test). NS, not significant.

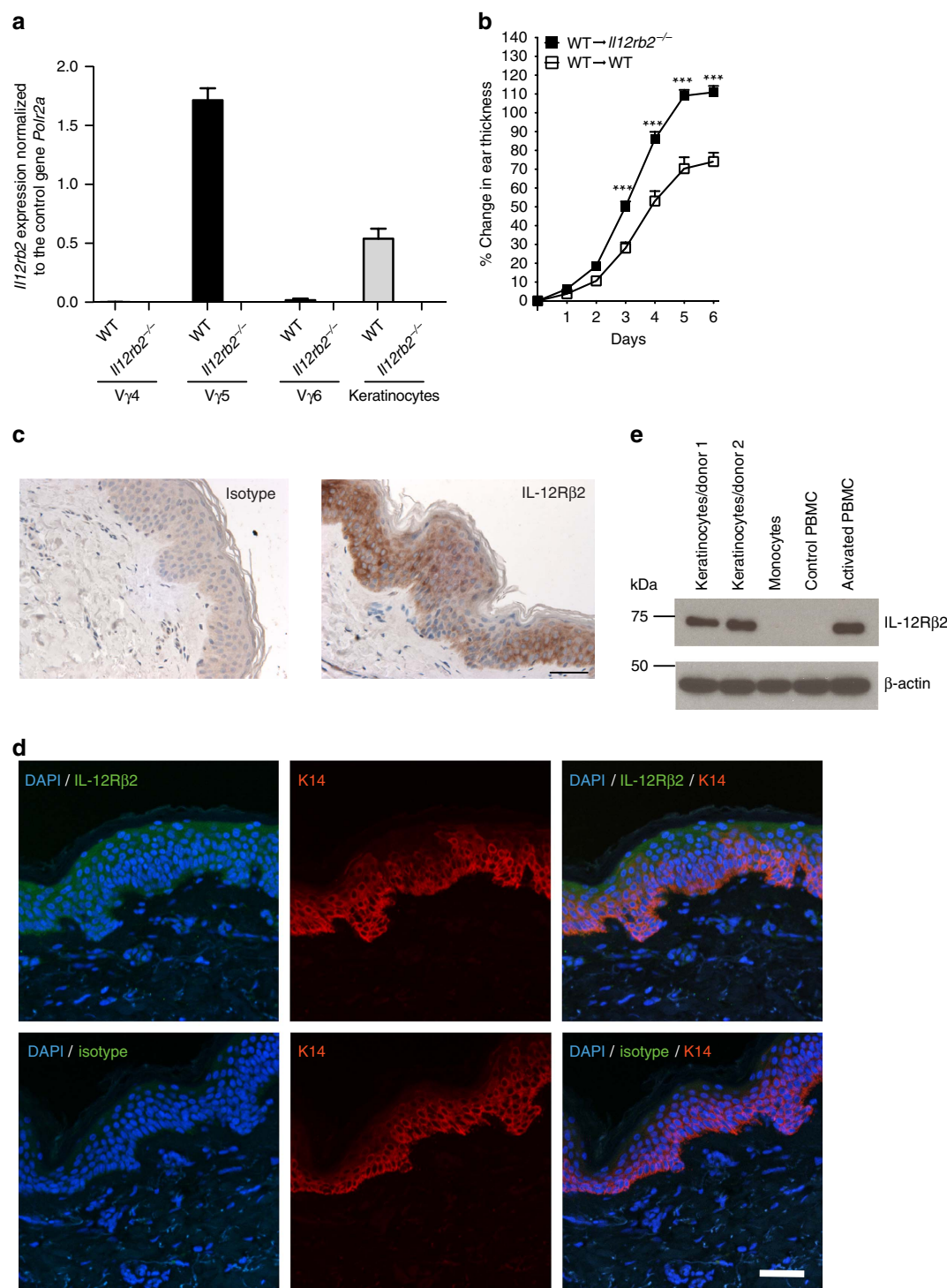


Figure 5 | IL-12 responding cells in psoriatic skin. (a) WT and *Il12rb2*^{-/-} mice were treated with Aldara for 6 days. V γ 4⁺, V γ 5⁺ and V γ 6⁺ γ T cells were sorted by flow cytometry from WT and *Il12rb2*^{-/-} Aldara-treated skin, and real-time quantitative PCR analysis for *Il12rb2* expression was performed. *Polr2a* was used as a house-keeping gene. Cumulative graph of four independent experiments ($n = 4$ per WT and *Il12rb2*^{-/-}, average mean \pm s.e.m.). Keratinocytes were sorted from naive WT and *Il12rb2*^{-/-} animals, and *Il12rb2* expression analysis was performed. Cumulative graph of three independent experiments ($n = 3$ per WT and *Il12rb2*^{-/-}, average mean \pm s.e.m.). (b) Bone marrow chimeras were treated with Aldara for 7 days. Ear skin inflammation represented as a per cent change in ear thickness compared with untreated ear on day 0. Cumulative graph of four independent experiments ($n = 17$ per WT into WT and 16 per WT into *Il12rb2*^{-/-}, average mean \pm s.e.m.). (c,d) Skin sections from healthy human donors were stained with antibodies against (c) human IL-12R β 2 or total rabbit IgG for immunohistochemistry; scale bar, 50 μ m, and (d) human IL-12R β 2 or total rabbit IgG (green), K14 (red) and 4,6-diamidino-2-phenylindole (DAPI; blue) for immunofluorescent staining; scale bar, 50 μ m. (e) Immunoblot analysis of IL-12R β 2 in human primary keratinocytes. Human monocytes, naive and activated PBMCs were used as negative and positive controls; please find Supplementary Fig. 11 showing uncropped western blot data. Each data point represents an individual (a) sort of pooled material of two mice (b) mouse. *** $P < 0.001$ ((b) two-way ANOVA with Bonferroni post test).

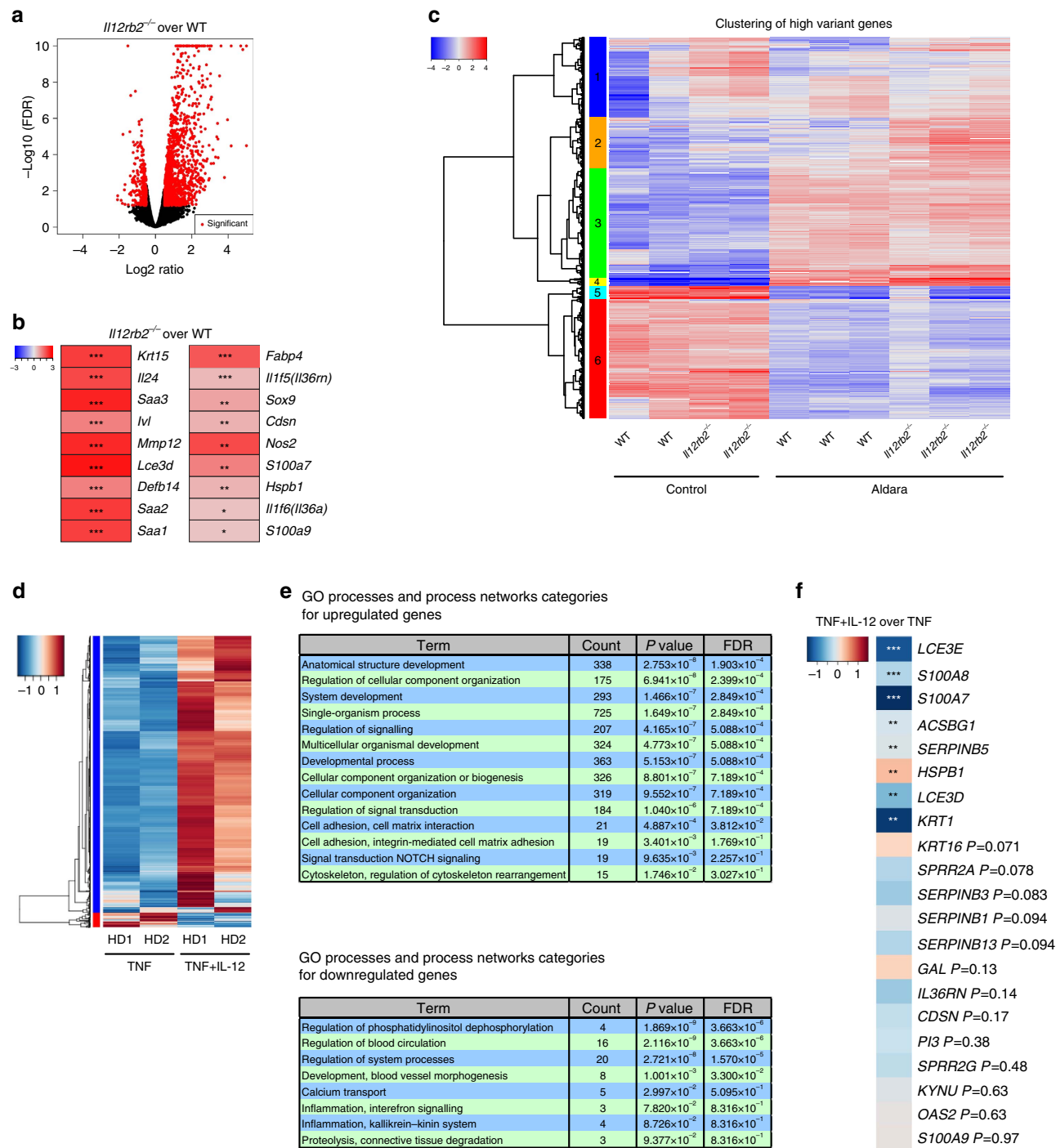


Figure 6 | NGS of mouse and human keratinocytes. (a–c) NGS was performed on RNA extracted from mouse keratinocytes sorted from naive and Aldara-treated skin of WT and *Il12rb2*^{-/-} animals. (a) Volcano plot showing log2ratio versus -log10(FDR) (*Il12rb2*^{-/-} versus WT). (b) Heatmaps showing representative psoriasis-related genes regulated by IL-12 pathway. Significance is shown alongside. (c) Heatmap image of rank based top 2,000 genes with highest s.d. of log2 signal across samples. (d–f) NGS of human primary keratinocytes activated with TNF in the presence or absence of IL-12. (d) Differentially regulated transcripts between cells stimulated with TNF and IL-12 versus TNF stimulation alone are shown in a heatmap image for two individual healthy donors (HD; n = 2). The blue colour represents low expression level while red indicates high expression levels. In all, 942 genes were significantly altered with *P* < 0.05. (e) The enriched gene ontology and process network categories for up- and downregulated transcripts based on the differentially expressed genes. (f) Heatmap showing representative psoriasis-related genes regulated by IL-12 stimulation. Significance is shown alongside. **P* < 0.05, ***P* < 0.01, ****P* < 0.001 ((b,f) unpaired two-tailed *t*-test). FDR, false discovery rate.

line between beneficial immune-modulation and detrimental immunosuppression it is imperative to delineate all aspects of the drugs' biological effect. One concern of particular importance, considering the continuous treatment regime in psoriasis, is the

prominent role of IL-12 in tumour control^{60,61}. Indeed, briakinumab, although very effective and overall positively evaluated, showed a conspicuously increased rate of cancer in different clinical studies^{6,62}. So far, it was hypothesized that

blocking of IL-12 could extend the drug's anti-inflammatory effectiveness, as presence of T_H1 cells and IFN- γ in psoriatic lesions has been reported²⁷. But data on a causal relationship of either IL-12 or IFN- γ and psoriasis was—until now—missing. At the same time data presented from past and on-going comparative clinical studies of mAbs targeting solely the IL-23/IL-17 axis versus the share subunit of IL-23 and IL-12 attested a higher efficacy to the formed approach^{29,30}, which is in conflict with the notion of a dominant pro-psoriatic role of IL-12 in the skin. Concordant with the correlative data from patient skin biopsies we found IFN- γ to be produced within the Aldara-induced psoriatic lesions (data not shown) and confirmed the pro-psoriatic function of IFN- γ . Here we found IL-12, which generally drives type 1 immune responses, to not only act independent of IFN- γ , but instead to suppress inflammation in the skin. Although surprising at first sight, a protective role of IL-12 in an inflammatory condition has been observed in other tissues, for example, in organ-specific autoimmune inflammation of the central nervous system. There, likewise to the clinical findings in our psoriasis model, IL-12 restrains part of the inflammatory response^{53,54}. Also in EAE a dual role of IL-12 is debated, as type 1 immunity is partially considered to be instrumental in disease progression and central nervous system pathology, but on the other hand the net effect of IL-12 is clearly anti-inflammatory. The mechanistic underpinning of this in EAE, however, remains largely unclear.

It is only in the past few years that the significant contribution of $\gamma\delta T$ cells in type 17-driven diseases has been explored. Also in psoriatic lesions their contribution has been noted^{12,63–65}, but the precise nature of their action in human inflammatory disease, as well as the translation of functional $\gamma\delta T$ cell subset identities remains unclear. Invariant $\gamma\delta T$ cells, like any innate lymphoid cell type, are low in frequency and their analysis in humans is hampered by the typically small sizes of tissue biopsies. With the data available to date it is hard to predict whether a homologue or functional orthologue of $V\gamma 6^+$ $\gamma\delta T17$ cells exists in humans and if accumulation of such cells is affected by IL-12. In mice, the presence of IL-12 prevents the unbridled accumulation of $V\gamma 6^+$ type 17 cells, independent of $V\gamma 4^+$ $\gamma\delta T17$ cells, resulting in a net surplus of IL-17. Importantly, IL-12 did not affect skin-invading $\gamma\delta T17$ cells directly.

Whereas TNF or IL-1 β have long been recognized to interact with both haematopoietic and stromal cells, here we describe that IL-12 too can directly communicate with the stromal micro-environment, independent of its function in immune cells. In contrast to mediators such as TNF or IL-1 β , which exacerbate epithelial inflammation⁶⁶, IL-12 initiates a tissue-protective response in keratinocytes. Moreover, IL-12 counter-regulated the psoriatic transcriptional signature in both murine and human keratinocytes. IL-12 specifically modifies transcriptional programmes affecting tissue structure remodelling, which in turn could affect immune cell accumulation and recruitment allowing available pathogenic lymphocytes to populate the tissue. In the Aldara-induced psoriasis model, the cells accumulating in IL-12-deficient tissue are predominantly $V\gamma 6^+$ type 17 cells. The increase in net IL-17 activates the local stroma (for example, keratinocytes) amplifying the type 17 signature in the tissue, which can explain the drastic increase in neutrophil influx and epidermal micro-abscesses in *Il12a*^{-/-} mice.

Thus, while our data causally relate psoriasis to be a bona fide type 17 inflammatory disorder with minor contribution of type 1 effector response, we additionally demonstrate that IL-12 mediates an autonomous regulatory programme in the skin. Whether these preclinical findings can be fully translated to human patients remains to be established, however, it does offer a lead towards understanding the higher clinical efficacy of

anti-p19 and anti-IL-17 drugs compared with ustekinumab (anti-p40) in psoriasis vulgaris patients. The observed anti-psoriatic effect of IL-12 may not be exclusively mediated through its impact on the keratinocyte compartment, and additional IL-12-responsive cell types may contribute. Nonetheless, we conclude that collateral targeting of IL-12 with anti-p40 mAbs in the treatment of psoriasis might carry more risk than benefit and even be counterproductive, which warrants further translational investigation.

Methods

Mice. C57BL/6 were purchased from Janvier (Saint Berthevin, France). *Il12rb2*^{-/-}, *Il12a*^{-/-}, *Ebi3*^{-/-}, *Ifng*^{-/-} and *Il23a*^{-/-} were purchased from Jackson Laboratory (Bar Harbor, ME, USA) and Regeneron (Tarrytown, NY, USA), respectively. *Il12b*^{-/-} mice were purchased from Jackson Laboratory or provided by E. von Stebut and K. Schwonberg (Mainz, Germany). *Vd1*^{-/-} animals were provided by K. Kishihara (Nagasaki, Japan). Mice were kept in house under specific pathogen-free conditions. Animal experiments were approved by the Swiss Cantonal Veterinary Office (33/2010 and 68/2013).

Aldara treatment. The 7- to 11-week-old female mice (cf. figure legends) of similar body weight and synchronized hair cycle were used for all experiments. Back skin of mice was shaved and depilated, and 48 h later 55 mg of Aldara cream (5% IMQ; 3M Pharmaceuticals, Maplewood, MN, USA) was applied daily for 2 or 5–6 constitutive days. When ear skin was used 7 mg of Aldara was applied on each ear for 6–7 constitutive days. Back skin or ear thickness was measured daily with a digital calliper. Skin inflammation is represented as a per cent change in the skin thickness compared with untreated skin on day 0. IL-12Fc/PBS treatment was performed by local subcutaneous injection of 200 ng of IL-12Fc (ref. 67) or PBS per each ear. Mice were injected every second day starting on day -1. Anti-IL-17A (17F3, BioXcell, West Lebanon, NH, USA) or isotype control (MOPC-21, BioXcell), anti-IL12p75 (R2-9A5, BioXcell) or isotype control (LTF-2, BioXcell) antibodies were injected intraperitoneally. Mice received 200 μ g of antibodies every second day starting on day -1.

Group sizes were at least two experimental versus two control mice, but most of the time three versus three or more. Mouse numbers and experiment numbers are stated in the individual figure legends. All individual experiments showed the phenotypes depicted by the cumulative graphs. Mice of different experimental groups were mixed in the cages and the order in which individual mice were picked for Aldara treatment or any measurements was random. All experiments were blinded for disease induction and experimental read-outs.

TEWL measurement. TEWL of dorsal skin was measured during the course of Aldara-induced plaque formation by use of an evaporimeter equipped with a closed chamber probe (Aquaflux AF200, Biox System Ltd, London, UK).

Mouse skin leukocyte isolation. Back skin or ears were cut into small pieces and digested for 1 h at 37 °C in RPMI 1640 (PAN-Biotech, Aidenbach, Germany) medium containing 1 mg ml⁻¹ collagenase type IV (Sigma-Aldrich, St Louis, MO, USA), 25 mM HEPES (Gibco, Thermo Fisher Scientific, Waltham MA, USA) and 0.1 mg ml⁻¹ DNase (Sigma-Aldrich). Cells were filtered with a 70 μ m cell strainer to receive single-cell suspension.

Mouse keratinocyte isolation. For real-time quantitative PCR analysis, as well as NGS back skin was incubated for 2 h at 37 °C in HBSS buffer (Gibco) containing 2.4 mg ml⁻¹ of dispase (Roche, Switzerland), next cut into small pieces and digested for another hour at 37 °C in HBSS buffer containing 10% FCS, 0.4 mg ml⁻¹ collagenase type IV (Sigma-Aldrich) and 0.1 mg ml⁻¹ DNase (Sigma-Aldrich). Cells were filtered with a 70 μ m cell strainer to receive single-cell suspension.

Bone marrow/neonatal thymocyte chimeras. Host animals received split dose (2 \times 550 rad with 24 h interval) before receiving 5 \times 10⁶ donor bone marrow together with 2 \times 10⁶ donor neonatal thymocytes. Mice were kept for another 8 weeks to allow immune system reconstitution.

Human skin biopsies and primary keratinocyte cell isolation. All donors signed written informed consent forms in accordance with the Code of Ethics of the World Medical Association (Declaration of Helsinki) for experiments involving humans (ethical approval number EK647). All samples were obtained from the University Hospital Zurich. Healthy human skin pieces (~0.5–1 cm²) were incubated overnight at 4 °C in CnT07 (CELLnTEC) medium complemented with 1% penicillin (Gibco), 1% streptomycin (Gibco), 1% amphotericin B (Gibco) and 10 mg ml⁻¹ dispase (Roche). Afterwards, the epidermis was separated manually and incubated in pre-warmed 0.25% trypsin-EDTA (Gibco) for ~5 min. Keratinocytes were scratched off the epidermis and centrifuged at 1,500 r.p.m. for

5 min. The pellet was re-suspended in CnT07 medium complemented with antibiotics and antimycotic, and transferred to a culture flask. Medium was changed every 2 days until the cells reached 80–90% confluence and could be split for the first time.

Human PBMC isolation. Blood samples from healthy volunteers were recruited via the blood donation centre, Zurich, Switzerland, with approval of the Cantonal Ethics Committee, Zurich. PBMCs were isolated by density gradient centrifugation using Lympholyte-H (Cedarlanes, Burlington, NC, USA). Cells were cultured for 3 days in RPMI 1640 (PAN-Biotech) with 10% FCS, 10 ng ml^{-1} IL-2 (PeproTech, Rocky Hill, NJ, USA), 10 ng ml^{-1} IL-12 (PeproTech), $1 \mu\text{g ml}^{-1}$ anti-human CD28 antibody (CD28.2, BD Pharmingen, San Diego, CA, USA) and $1 \mu\text{g ml}^{-1}$ plate-bound anti human CD3 antibody (OKT3, BioXcell). Next, cells were washed and lysed for protein extraction. Human monocytes were enriched using magnetically labelled anti-CD14 MicroBeads in combination with the AutoMACS system (both Miltenyi Biotec, Auburn, CA, USA). CD14-positive cells were collected, washed and lysed for protein extraction.

Cell lines. 17D1 hybridoma (anti-mouse $\text{V}\gamma 5/\text{V}\delta 1$, $\text{V}\gamma 6/\text{V}\delta 1$ and $\text{V}\gamma 1/\text{V}\delta 1$; rat immunoglobulin IgM) was kindly provided by Robert R Tigelaar. Cells were cultured in RPMI 1640 medium supplemented with 10% fetal bovine serum (Biochrome AG, Berlin, Germany), 10 mM HEPES, penicillin (Gibco), streptomycin (Gibco), glutamine (Gibco), sodium pyruvate (Gibco) and non-essential amino acids (Gibco). After 3 and 6 days of culture supernatant was collected, centrifuged, filtered and used for staining.

Flow cytometry. For surface and intracellular staining following antibodies coupled to the appropriate fluorochromes were titrated and used in saturating concentration: rat anti-mouse CD45 (30-F11, BD, Franklin Lakes, NJ, USA, 1:800); rat anti-mouse CD3 (17A2, eBioscience, San Diego, CA, USA, 1:100); rat anti-mouse CD11b (M1/70, BioLegend, San Diego, CA, USA, 1:400); rat anti-mouse Ly6G (1A8, BD, 1:400); armenian hamster anti-mouse $\gamma\delta$ TCR (GL3, eBioscience, 1:400); armenian hamster anti-mouse $\text{V}\gamma 4$ TCR (UC3-10A6, BioLegend, 1:400); syrian hamster anti-mouse $\text{V}\gamma 5$ TCR (536, BioLegend, 1:400); rat anti-mouse IL-17A (TC11-18H10, BioLegend, 1:200); rat anti-mouse/-human CD49f (GoH3, BioLegend, 1:300); and rat anti-mouse CD34 (RAM34, eBioscience, 1:100). Cells were incubated for 10 min at 4°C with $1 \mu\text{g}$ of rat anti-mouse CD16/CD32 (93, eBioscience) antibodies, followed by 25 min surface staining at 4°C . For intracellular staining, mouse cells were stimulated with 50 ng ml^{-1} phorbol 12-myristate 13-acetate (Applchem, Darmstadt, Germany) and 500 ng ml^{-1} ionomycin (Invitrogen, Thermo Fisher Scientific, Carlsbad, CA USA) in the presence of GolgiPlug (BD Biosciences) for 2 h. After surface staining cells were fixed and permeabilized according to the manufacturer's (BD Biosciences) recommendations and next stained intracellularly. For 17D1 staining of $\text{V}\gamma 5/\text{V}\delta 1^+$ and $\text{V}\gamma 6/\text{V}\delta 1^+$ cells, cells were first preincubated with rat anti-mouse $\gamma\delta$ TCR antibody (GL3, eBioscience, 1:400) for 20 min in 4°C , next washed and incubated with $100 \mu\text{l}$ of 17D1 hybridoma supernatant for the next 20 min followed by washing and 20 min incubation with fluorochrome-conjugated secondary antibody goat anti-rat IgM (Jackson ImmunoResearch Laboratories, West Grove, PA, USA, 1:200). Samples were analysed with a BD FACS LSR II Fortessa. Post-acquisition analysis was done with FlowJo (Tree Star, Ashland, OR, USA) software.

Cell sorting. $\gamma\delta\text{T}$ cells were isolated from the back skin of Aldara-treated WT or *Il12rb2*^{-/-} mice on day 6 post treatment. The whole-cell suspension was stained with the following: rat anti-mouse CD45 (30-F11, BD, 1:800); rat anti-mouse CD11b (M1/70, BioLegend, 1:400); rat anti-mouse CD3 (17A2, eBioscience, 1:100); rat anti-mouse $\gamma\delta$ TCR (GL3, eBioscience, 1:400); rat anti-mouse $\text{V}\gamma 5$ (536, BioLegend, 1:400); rat anti-mouse $\text{V}\gamma 4$ (UC3-10A6, BioLegend, 1:400) or 17D1 antibodies. Cells were sorted with BD FACS Aria III using $70 \mu\text{m}$ nozzle. Murine keratinocytes were isolated from naive skin or treated with Aldara for 2 days. The whole-cell suspension was stained with rat anti-mouse CD45 (30-F11, BD, 1:800), rat anti-mouse CD34 (RAM34, eBioscience, 1:100) and rat anti-mouse/-human CD49f (GoH3, BioLegend, 1:300) antibodies. Cells were sorted with BD FACS Aria III using $100 \mu\text{m}$ nozzle.

RNA extraction and real-time quantitative PCR. Total RNA was isolated from the back skin of Aldara-treated animals, mouse skin-sorted leukocytes or keratinocytes, with a Pure Link RNA Micro Kit (Invitrogen) or RNeasy Plus Micro Kit (QIAGEN, Valencia, CA, USA). cDNA was prepared using SuperScript III reverse transcriptase (Invitrogen). Mouse gene expression was measured by real-time quantitative PCR analysis using the CFX 384 Real-Time detection system (Bio-Rad, Hercules, CA, USA) with SYBR Green Supermix (Bio-Rad). Sequences for PCR primers can be found in Supplementary Table 1. Transcript expression was normalized to the *Polr2a* or *Gapdh* house-keeping gene and represented as either $2^{-\Delta\text{C}_\text{T}}$, ($\Delta\text{C}_\text{T} = \text{C}_\text{T}$ gene of interest – C_T house-keeping gene) in the case of *Il12rb2* expression or $2^{-\Delta\Delta\text{C}_\text{T}}$ ($\Delta\Delta\text{C}_\text{T} = \Delta\text{C}_\text{T} - \Delta\text{C}_\text{T}^{\text{Control}}$), for all other transcripts.

Histochemistry. Skin tissue samples were fixed in 4% paraformaldehyde and embedded in paraffin. Mouse skin sections were stained with haematoxylin and eosin according to standard protocols. Deparaffinized human skin sections were submitted to antigen retrieval with citrate buffer pH 6 (DAKO, Hamburg, Germany) followed by blocking and staining with polyclonal rabbit anti-human IL-12R $\beta 2$ antibody (Novus Biologicals, Littleton, CO, USA; $0.7 \mu\text{g ml}^{-1}$) or total rabbit IgG (Sigma, $0.7 \mu\text{g ml}^{-1}$) using Dako Envision + Dual Link System-HRP (DAB +) staining (DAKO) and following the manufacturer's procedure. We recorded digital images of tissue sections using an Olympus BX41 light microscope with an Olympus ColorView IIIu camera and Olympus Cell B image acquisition software. For immunofluorescence staining of human skin sections we co-stained with monoclonal mouse anti-human cytokeratin 14 (K14) antibody (LL002, Abcam, Cambridge, UK, 1:300). Secondary antibodies were Alexa Fluor 546-conjugated goat anti-rabbit IgG or Alexa Fluor 633-conjugated goat anti-mouse IgG (Invitrogen, 1:500). Specimens were mounted in 4,6-diamidino-2-phenylindole-containing mounting medium (Invitrogen) and analysed with a SP5 Leica confocal laser scanning microscope (SP5; Leica, Wetzlar, Germany) using an argon and a helium laser with a $\times 20$ objective (oil immersion, numerical aperture 0.7, Leica) and Imaris imaging software (version 7.5.1; Bitplane, Zurich, Switzerland).

Western blot analysis of human IL-12R $\beta 2$. Human primary keratinocyte monolayers, monocytes and PBMCs were lysed with the cell lysis buffer (Cell Signalling, Danvers, MA USA), complemented with complete EDTA-free protease inhibitor cocktail (Roche) and phosphatase inhibitor cocktail (Roche). Lysates were incubated for 15 min on ice followed by centrifugation at 4°C for 15 min at maximum speed. Supernatants were collected and total protein content was measured using bicinchoninic acid protein assay (Thermo Scientific, Waltham, MA USA). Equal amounts of cell lysates were separated by 10% SDS-PAGE and transferred to nitrocellulose (Bio-Rad) by wet blotting. Next, membranes were stained with polyclonal rabbit anti-human IL-12R $\beta 2$ antibodies (Novus Biologicals, 1:1,000) or monoclonal rabbit anti-mouse/human β -actin antibodies (13E5, Cell Signalling, 1:2,000) followed by staining with peroxidase-conjugated mouse antibodies against rabbit IgG (Jackson ImmunoResearch, 1:50,000). The signal was visualized using SuperSignal West Pico chemiluminescent substrate (Thermo Scientific).

NGS of human samples. Two independent NGS analysis were performed for human primary keratinocytes. For the first sequencing analysis, cells were isolated from two healthy donors and stimulated for 16 h with 25 ng ml^{-1} of TNF (PeproTech) followed by 6 h stimulation with 100 ng ml^{-1} IL-12 (PeproTech). For the second sequencing analysis cells were isolated from one healthy donor and stimulated in triplicates for 16 h with 25 ng ml^{-1} of TNF (PeproTech) followed by 12 h stimulation with 100 ng ml^{-1} IL-12 (PeproTech). Total RNA was isolated with RNeasy Plus Micro Kit (QIAGEN) according to the manufacturer's instructions. NGS was performed by the Functional Genomics Center in Zurich or by the Quantitative Genomics Facility in Basel. Reads were quality-checked with FastQC. Low-quality ends were clipped (3 bases from the start and 10 bases from the end). Trimmed reads were aligned to the reference genome and transcriptome (FASTA and GTF files, respectively, downloaded from the Ensembl GRCh38) with STAR version 2.3.0e_r291 (ref. 68) with default settings. Distribution of the reads across genomic isoform expression was quantified using the R package GenomicRanges⁶⁹ from Bioconductor Version 3.0. Differentially expressed genes were identified using the R package edgeR (ref. 70) from Bioconductor Version 3.0. Only transcripts with a read count above 10 in at least 50% of at least one of the two groups were retained in the two-group comparisons. Pathway analysis was performed with Metacore from Thomson Reuters (New York, NY, USA).

NGS of mouse samples. WT and *Il12rb2*^{-/-} keratinocytes were isolated from naive animals or treated for 2 days with Aldara. Cells were sorted and total RNA was isolated with RNeasy Plus Micro Kit (QIAGEN) according to the manufacturer's instructions. NGS was performed by the Quantitative Genomics Facility in Basel.

Statistics. Differences between ≥ 3 groups were evaluated with one-way or two-way analysis of variance (ANOVA) with Bonferroni's post test. Differences between two sets of data were evaluated using unpaired two-tailed *t*-test. Correlation calculation between two parameters has been performed using Pearson's *r* (comparable distribution was confirmed via quantile–quantile plots); **P* < 0.05, ***P* < 0.01, ****P* < 0.001, NS (not significant). Data were analysed using Prism software (GraphPad Software, Inc.).

Data availability. Sequence data that support the findings of this study have been deposited in the European Nucleotide Archive with the primary accession code PRJEB15422. The authors declare that all other data supporting the findings of this study are available within the article and its Supplementary Information files.

References

- Lowes, M. A., Suarez-Farinas, M. & Krueger, J. G. Immunology of psoriasis. *Annu. Rev. Immunol.* **32**, 227–255 (2014).
- Kagami, S., Rizzo, H. L., Lee, J. J., Koguchi, Y. & Blauvelt, A. Circulating Th17, Th22, and Th1 cells are increased in psoriasis. *J. Invest. Dermatol.* **130**, 1373–1383 (2010).
- Zaba, L. C. *et al.* Psoriasis is characterized by accumulation of immunostimulatory and Th1/Th17 cell-polarizing myeloid dendritic cells. *J. Invest. Dermatol.* **129**, 79–88 (2009).
- Yawalkar, N., Tschanner, G. G., Hunger, R. E. & Hassan, A. S. Increased expression of IL-12p70 and IL-23 by multiple dendritic cell and macrophage subsets in plaque psoriasis. *J. Dermatol. Sci.* **54**, 99–105 (2009).
- Piskin, G., Sylva-Steenland, R. M., Bos, J. D. & Teunissen, M. B. *In vitro* and *in situ* expression of IL-23 by keratinocytes in healthy skin and psoriasis lesions: enhanced expression in psoriatic skin. *J. Immunol.* **176**, 1908–1915 (2006).
- Langley, R. G. *et al.* Safety results from a pooled analysis of randomized, controlled phase II and III clinical trials and interim data from an open-label extension trial of the interleukin-12/23 monoclonal antibody, briakinumab, in moderate to severe psoriasis. *J. Eur. Acad. Dermatol. Venereol.* **27**, 1252–1261 (2013).
- Papp, K. A. *et al.* Efficacy and safety of ustekinumab, a human interleukin-12/23 monoclonal antibody, in patients with psoriasis: 52-week results from a randomised, double-blind, placebo-controlled trial (PHOENIX 2). *Lancet* **371**, 1675–1684 (2008).
- Papp, K. A. *et al.* Long-term safety of ustekinumab in patients with moderate-to-severe psoriasis: final results from 5 years of follow-up. *Br. J. Dermatol.* **168**, 844–854 (2013).
- Kimball, A. B. *et al.* Safety and efficacy of ABT-874, a fully human interleukin 12/23 monoclonal antibody, in the treatment of moderate to severe chronic plaque psoriasis: results of a randomized, placebo-controlled, phase 2 trial. *Arch. Dermatol.* **144**, 200–207 (2008).
- Di Cesare, A., Di Meglio, P. & Nestle, F. O. The IL-23/Th17 axis in the immunopathogenesis of psoriasis. *J. Invest. Dermatol.* **129**, 1339–1350 (2009).
- Chan, J. R. *et al.* IL-23 stimulates epidermal hyperplasia via TNF and IL-20R2-dependent mechanisms with implications for psoriasis pathogenesis. *J. Exp. Med.* **203**, 2577–2587 (2006).
- Cai, Y. *et al.* Pivotal role of dermal IL-17-producing gammadelta T cells in skin inflammation. *Immunity* **35**, 596–610 (2011).
- van der Fits, L. *et al.* Imiquimod-induced psoriasis-like skin inflammation in mice is mediated via the IL-23/IL-17 axis. *J. Immunol.* **182**, 5836–5845 (2009).
- Nair, R. P. *et al.* Genome-wide scan reveals association of psoriasis with IL-23 and NF-kappaB pathways. *Nat. Genet.* **41**, 199–204 (2009).
- Heilig, J. S. & Tonegawa, S. Diversity of murine gamma genes and expression in fetal and adult T lymphocytes. *Nature* **322**, 836–840 (1986).
- Pantelyushin, S. *et al.* Rorgammat + innate lymphocytes and gammadelta T cells initiate psoriasiform plaque formation in mice. *J. Clin. Invest.* **122**, 2252–2256 (2012).
- Gray, E. E., Suzuki, K. & Cyster, J. G. Cutting edge: Identification of a motile IL-17-producing gammadelta T cell population in the dermis. *J. Immunol.* **186**, 6091–6095 (2011).
- Papp, K. A. *et al.* Brodalumab, an anti-interleukin-17-receptor antibody for psoriasis. *N. Engl. J. Med.* **366**, 1181–1189 (2012).
- Leonardi, C. *et al.* Anti-interleukin-17 monoclonal antibody ixekizumab in chronic plaque psoriasis. *N. Engl. J. Med.* **366**, 1190–1199 (2012).
- Hueber, W. *et al.* Effects of AIN457, a fully human antibody to interleukin-17A, on psoriasis, rheumatoid arthritis, and uveitis. *Sci. Transl. Med.* **2**, 52ra72 (2010).
- Sofen, H. *et al.* Guselkumab (an IL-23-specific mAb) demonstrates clinical and molecular response in patients with moderate-to-severe psoriasis. *J. Allergy Clin. Immunol.* **133**, 1032–1040 (2014).
- Lee, E. *et al.* Increased expression of interleukin 23 p19 and p40 in lesional skin of patients with psoriasis vulgaris. *J. Exp. Med.* **199**, 125–130 (2004).
- Croxford, A. L., Mair, F. & Becher, B. IL-23: one cytokine in control of autoimmunity. *Eur. J. Immunol.* **42**, 2263–2273 (2012).
- Vignali, D. A. & Kuchroo, V. K. IL-12 family cytokines: immunological playmakers. *Nat. Immunol.* **13**, 722–728 (2012).
- Hong, K., Chu, A., Ludviksson, B. R., Berg, E. L. & Ehrhardt, R. O. IL-12, independently of IFN-gamma, plays a crucial role in the pathogenesis of a murine psoriasis-like skin disorder. *J. Immunol.* **162**, 7480–7491 (1999).
- Tonel, G. *et al.* Cutting edge: a critical functional role for IL-23 in psoriasis. *J. Immunol.* **185**, 5688–5691 (2010).
- Austin, L. M., Ozawa, M., Kikuchi, T., Walters, I. B. & Krueger, J. G. The majority of epidermal T cells in Psoriasis vulgaris lesions can produce type 1 cytokines, interferon-gamma, interleukin-2, and tumor necrosis factor-alpha, defining TC1 (cytotoxic T lymphocyte) and TH1 effector populations: a type 1 differentiation bias is also measured in circulating blood T cells in psoriatic patients. *J. Invest. Dermatol.* **113**, 752–759 (1999).
- Yawalkar, N., Karlen, S., Hunger, R., Brand, C. U. & Braathen, L. R. Expression of interleukin-12 is increased in psoriatic skin. *J. Invest. Dermatol.* **111**, 1053–1057 (1998).
- Lebwohl, M. *et al.* Phase 3 studies comparing brodalumab with ustekinumab in psoriasis. *N. Engl. J. Med.* **373**, 1318–1328 (2015).
- Thaci, D. *et al.* Secukinumab is superior to ustekinumab in clearing skin of subjects with moderate to severe plaque psoriasis: CLEAR, a randomized controlled trial. *J. Am. Acad. Dermatol.* **73**, 400–409 (2015).
- Papp, K. *et al.* in *Arthritis & Rheumatology* Vol. 67 (Wiley-Blackwell, 2015).
- Berardesca, E. & Maibach, H. I. Noninvasive bioengineering assessment of psoriasis. *Int. J. Dermatol.* **28**, 157–160 (1989).
- Cai, Y. *et al.* Differential developmental requirement and peripheral regulation for dermal Vgamma4 and Vgamma6T17 cells in health and inflammation. *Nat. Commun.* **5**, 3986 (2014).
- Hara, H. *et al.* Development of dendritic epidermal T cells with a skewed diversity of gamma delta TCRs in V delta 1-deficient mice. *J. Immunol.* **165**, 3695–3705 (2000).
- Hamada, S. *et al.* Importance of murine Vdelta1gammadelta T cells expressing interferon-gamma and interleukin-17A in innate protection against *Listeria monocytogenes* infection. *Immunology* **125**, 170–177 (2008).
- Sawant, D. V., Hamilton, K. & Vignali, D. A. Interleukin-35: expanding its job profile. *J. Interferon Cytokine Res.* **35**, 499–512 (2015).
- Trinchieri, G. Interleukin-12 and the regulation of innate resistance and adaptive immunity. *Nat. Rev. Immunol.* **3**, 133–146 (2003).
- Sugaya, M., Nakamura, K. & Tamaki, K. Interleukins 18 and 12 synergistically upregulate interferon-gamma production by murine dendritic epidermal T cells. *J. Invest. Dermatol.* **113**, 350–354 (1999).
- Di Meglio, P. *et al.* Activation of the aryl hydrocarbon receptor dampens the severity of inflammatory skin conditions. *Immunity* **40**, 989–1001 (2014).
- Witherden, D. A. & Havran, W. L. Cross-talk between intraepithelial gammadelta T cells and epithelial cells. *J. Leukoc. Biol.* **94**, 69–76 (2013).
- Li, Y. *et al.* Exogenous stimuli maintain intraepithelial lymphocytes via aryl hydrocarbon receptor activation. *Cell* **147**, 629–640 (2011).
- Lowes, M. A., Russell, C. B., Martin, D. A., Towne, J. E. & Krueger, J. G. The IL-23/T17 pathogenic axis in psoriasis is amplified by keratinocyte responses. *Trends Immunol.* **34**, 174–181 (2013).
- Bouchaud, G. *et al.* Epidermal IL-15Ralpha acts as an endogenous antagonist of psoriasiform inflammation in mouse and man. *J. Exp. Med.* **210**, 2105–2117 (2013).
- Schwarz, A. *et al.* Interleukin-12 suppresses ultraviolet radiation-induced apoptosis by inducing DNA repair. *Nat. Cell Biol.* **4**, 26–31 (2002).
- Schwarz, A. *et al.* Prevention of UV radiation-induced immunosuppression by IL-12 is dependent on DNA repair. *J. Exp. Med.* **201**, 173–179 (2005).
- Schmitt, D. A., Walterscheid, J. P. & Ullrich, S. E. Reversal of ultraviolet radiation-induced immune suppression by recombinant interleukin-12: suppression of cytokine production. *Immunology* **101**, 90–96 (2000).
- Molenda, M., Mukkamala, L. & Blumenberg, M. Interleukin IL-12 blocks a specific subset of the transcriptional profile responsive to UVB in epidermal keratinocytes. *Mol. Immunol.* **43**, 1933–1940 (2006).
- Perera, G. K., Di Meglio, P. & Nestle, F. O. Psoriasis. *Annu. Rev. Pathol.* **7**, 385–422 (2012).
- Gudjonsson, J. E. *et al.* Assessment of the psoriatic transcriptome in a large sample: additional regulated genes and comparisons with *in vitro* models. *J. Invest. Dermatol.* **130**, 1829–1840 (2010).
- Chiricozzi, A. *et al.* Integrative responses to IL-17 and TNF-alpha in human keratinocytes account for key inflammatory pathogenic circuits in psoriasis. *J. Invest. Dermatol.* **131**, 677–687 (2011).
- Leonardi, C. L. *et al.* Etanercept as monotherapy in patients with psoriasis. *N. Engl. J. Med.* **349**, 2014–2022 (2003).
- Croxford, A. L., Kulig, P. & Becher, B. IL-12 and IL-23 in health and disease. *Cytokine Growth Factor Rev.* **25**, 415–421 (2014).
- Cua, D. J. *et al.* Interleukin-23 rather than interleukin-12 is the critical cytokine for autoimmune inflammation of the brain. *Nature* **421**, 744–748 (2003).
- Becher, B., Durell, B. G. & Noelle, R. J. Experimental autoimmune encephalitis and inflammation in the absence of interleukin-12. *J. Clin. Invest.* **110**, 493–497 (2002).
- Gran, B. *et al.* IL-12p35-deficient mice are susceptible to experimental autoimmune encephalomyelitis: evidence for redundancy in the IL-12 system in the induction of central nervous system autoimmune demyelination. *J. Immunol.* **169**, 7104–7110 (2002).
- Kopp, T. *et al.* Clinical improvement in psoriasis with specific targeting of interleukin-23. *Nature* **521**, 222–226 (2015).
- Reich, K. *et al.* A 52-week trial comparing briakinumab with methotrexate in patients with psoriasis. *N. Engl. J. Med.* **365**, 1586–1596 (2011).
- Gordon, K. B. *et al.* Long-term safety experience of ustekinumab in patients with moderate to severe psoriasis (Part II of II): results from analyses of infections and malignancy from pooled phase II and III clinical trials. *J. Am. Acad. Dermatol.* **66**, 742–751 (2012).

59. Young, L. & Czarnecki, D. The rapid onset of multiple squamous cell carcinomas in two patients commenced on ustekinumab as treatment of psoriasis. *Australas. J. Dermatol.* **53**, 57–60 (2012).
60. Ngiew, S. F., Teng, M. W. & Smyth, M. J. A balance of interleukin-12 and -23 in cancer. *Trends Immunol.* **34**, 548–555 (2013).
61. Tugues, S. *et al.* New insights into IL-12-mediated tumor suppression. *Cell Death Differ.* **22**, 237–246 (2015).
62. Gordon, K. B. *et al.* A phase III, randomized, controlled trial of the fully human IL-12/23 mAb briakinumab in moderate-to-severe psoriasis. *J. Invest. Dermatol.* **132**, 304–314 (2012).
63. Laggner, U. *et al.* Identification of a novel proinflammatory human skin-homing Vgamma9Vdelta2 T cell subset with a potential role in psoriasis. *J. Immunol.* **187**, 2783–2793 (2011).
64. Seung, N. R. *et al.* Comparison of expression of heat-shock protein 60, Toll-like receptors 2 and 4, and T-cell receptor gamma delta in plaque and guttate psoriasis. *J. Cutan. Pathol.* **34**, 903–911 (2007).
65. Swindell, W. R., Johnston, A., Voorhees, J. J., Elder, J. T. & Gudjonsson, J. E. Dissecting the psoriasis transcriptome: inflammatory- and cytokine-driven gene expression in lesions from 163 patients. *BMC Genomics* **14**, 527 (2013).
66. Banno, T., Gazel, A. & Blumenberg, M. Effects of tumor necrosis factor-alpha (TNF alpha) in epidermal keratinocytes revealed using global transcriptional profiling. *J. Biol. Chem.* **279**, 32633–32642 (2004).
67. Vom Berg, J. *et al.* Intratumoral IL-12 combined with CTLA-4 blockade elicits T cell-mediated glioma rejection. *J. Exp. Med.* **210**, 2803–2811 (2013).
68. Dobin, A. *et al.* STAR: ultrafast universal RNA-seq aligner. *Bioinformatics* **29**, 15–21 (2013).
69. Lawrence, M. *et al.* Software for computing and annotating genomic ranges. *PLoS Comput. Biol.* **9**, e1003118 (2013).
70. Robinson, M. D., McCarthy, D. J. & Smyth, G. K. edgeR: a Bioconductor package for differential expression analysis of digital gene expression data. *Bioinformatics* **26**, 139–140 (2010).

Acknowledgements

We thank R.E. Tigelaar for providing us with 17D1 hybridoma. We are grateful for the supply of *Il12b*^{-/-} mice by E. von Stebut and K. Schwonberg. The excellent technical support and animal husbandry of S. Hasler, J. Jaberg, B. Schnautz, J. Grosch and N. Burkhalter is greatly appreciated. The work was partly performed in collaboration with the Cooperative Research Project Program of the Medical Institute of Bioregulation, Kyushu University (K.K.) and was supported by grants from the Swiss National Science

Foundation (316030 150768, 310030 146130 and CRSII3 136203) (B.B.), European Union FP7 project TargetBraIn, NeuroKine and ATECT (B.B.) and the University priority project translational cancer research (B.B.).

Author contributions

P.K. designed and performed most of the experiments, evaluated and interpreted data, wrote the manuscript; S.M. and G.G. performed some of the experiments and evaluated the data; S.N.F. performed human keratinocyte isolation; B.S. performed and evaluated skin histology; G.R. evaluated NGS data; F.A. supervised TEWL measurements; S.P. provided technical help with some of the experiments; K.K. provided *Vd1*^{-/-} mice; F.S., T.K. and G.F.L.H. supervised and/or performed some of the experiments; S.H. designed and performed some of the experiments; S.H. and B.B. evaluated and interpreted data, wrote the manuscript as well as financed and supervised the study.

Additional information

Supplementary Information accompanies this paper at <http://www.nature.com/naturecommunications>

Competing financial interests: The authors declare no competing financial interests.

Reprints and permission information is available online at <http://npg.nature.com/reprintsandpermissions/>

How to cite this article: Kulig, P. *et al.* IL-12 protects from psoriasiform skin inflammation. *Nat. Commun.* **7**, 13466 doi: 10.1038/ncomms13466 (2016).

Publisher's note: Springer Nature remains neutral with regard to jurisdictional claims in published maps and institutional affiliations.



This work is licensed under a Creative Commons Attribution 4.0 International License. The images or other third party material in this article are included in the article's Creative Commons license, unless indicated otherwise in the credit line; if the material is not included under the Creative Commons license, users will need to obtain permission from the license holder to reproduce the material. To view a copy of this license, visit <http://creativecommons.org/licenses/by/4.0/>

© The Author(s) 2016